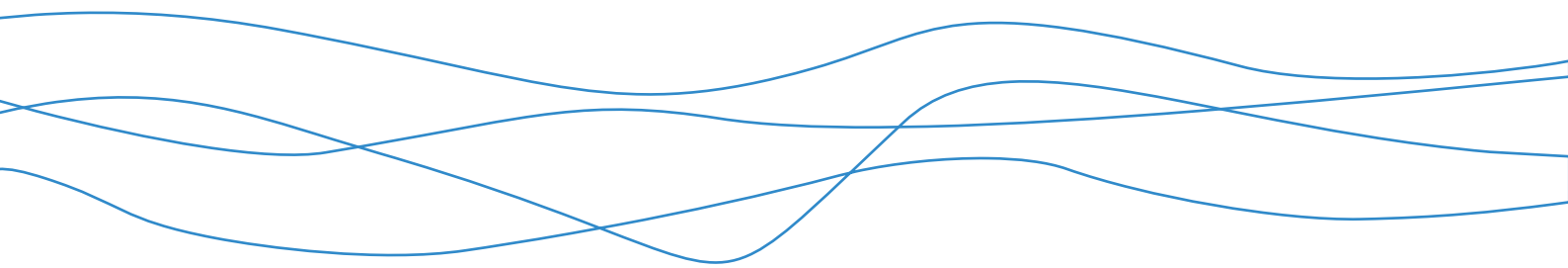




# **Bowdun Offshore Wind Farm, Onshore EIA Report**

Volume 1, Chapter 9: Cultural Heritage

TWP-BOW-JCB-ONE-RPT-00002 | November 2025



## Contents

<b>9</b>	<b>Cultural Heritage</b> .....	<b>1</b>
9.1	Introduction .....	1
9.2	Cultural Heritage Study Areas .....	2
9.3	Legislative and Policy Context.....	2
9.4	Consultation .....	7
9.5	Methodology for Assessment of Effects.....	11
9.6	Key Parameters for Assessment.....	14
9.7	Baseline Environment .....	18
9.8	Embedded Measures and Mitigation .....	20
9.9	Assessment of Significance .....	21
9.10	Inter-Related Effects.....	25
9.11	Cumulative Effects Assessment .....	25
9.12	Summary of Impacts, Mitigation and Likely Significant Environmental Effects.....	27
	<b>References</b> .....	<b>29</b>
	<b>Annex – Figures</b> .....	<b>32</b>

## List of Tables

Table 9.1: Summary of key consultation issues raised during consultation activities undertaken for the Proposed Development relevant to Cultural Heritage.....	8
Table 9.2: Criteria to assess the sensitivity of archaeological remains, historic buildings and Historic Landscape Types (HLTs).....	11
Table 9.3: Magnitude of impact on heritage assets.....	12
Table 9.4: Matrix for determination of Significance of Effect .....	13
Table 9.5: Maximum Design Scenario Considered for Each Potential Impact as Part of the Assessment of Likely Significant Environmental Effects on Cultural Heritage .....	15
Table 9.6: Impacts Scoped Out of the Assessment for Cultural Heritage .....	17
Table 9.7: Total numbers of heritage assets assessed as part of the Cultural Heritage baseline .....	18
Table 9.8: Embedded Measures Adopted as Part of the Proposed Development.....	20
Table 9.9: Potential significant effects arising from the construction phase of the Proposed Development.....	24
Table 9.10: Screening of Other Projects for Consideration within the CEA for Cultural Heritage .....	25

## List of Figures

Figure 9.1: Archaeological Remains and Historic Buildings .....	Annex – Figures
Figure 9.2: Historic Landscape Types (HLTs) .....	Annex – Figures

## 9 Cultural Heritage

### 9.1 Introduction

9.1.1 This chapter of the Environmental Impact Assessment Report (EIAR) presents an assessment of the effects of the Bowdun Offshore Wind Farm Project Onshore Infrastructure (hereafter referred to as the Proposed Development) on Cultural Heritage under the three sub-topics of archaeological remains, historic buildings and the historic landscape.

9.1.2 This chapter is supported by the following figures and appendices, which are cross referenced where relevant:

- Volume 2, Appendix 9.1: Historic Environment Desk-Based Assessment;
- Volume 2, Appendix 9.2: Assessment of Non-Significant Cultural Heritage Effects;
- Figure 9.1 (Annex – Figures): Archaeological Remains and Historic Buildings; and
- Figure 9.2 (Annex – Figures): Historic Landscape Types (HLTs).

#### Scope of the Assessment

9.1.3 For Cultural Heritage, the following potential impacts were scoped out of the assessment:

- construction phase impacts relating to setting;
- accidental construction phase impacts;
- operational impacts on designated heritage assets outside the Cultural Heritage Study Area(s);
- operational impacts relating to the setting of non-designated heritage assets of less than national importance; and
- decommissioning phase impacts.

9.1.4 Therefore, the following have been scoped in:

- direct (physical) impacts during construction;
- direct (physical) impacts during operation; and
- operational impacts relating to the setting of designated heritage assets of national importance.

9.1.5 This approach was agreed with Historic Environment Scotland (HES) and Aberdeenshire Council (see Section 9.4).

9.1.6 Baseline information, an assessment of effect, mitigation and an assessment of residual effect for those heritage assets where, in the absence of mitigation, the effect has been assessed to be potentially significant (i.e. of Moderate significance or greater) are presented in this chapter.

9.1.7 Baseline information for heritage assets on which a non-significant effect has been assessed is presented in Volume 2, Appendix 9.1: Historic Environment Desk-Based Assessment and the assessment of effect for these heritage assets is presented in Volume 2, Appendix 9.2: Assessment of Non-Significant Cultural Heritage Effects.

9.1.8 All heritage assets identified are shown on shown on Figure 9.1 and 9.2 (Annex – Figures).

## 9.2 Cultural Heritage Study Areas

9.2.1 The Cultural Heritage Study Areas were defined as:

- For the Cable Corridor: the PPP Application Boundary for the Proposed Development and an area extending 250 m in all directions from it;
- For the proposed Substation site:
  - the PPP Application Boundary for the proposed Substation site and a 3 km Cultural Heritage Study Area for World Heritage Sites, Scheduled Monuments, Category A Listed Buildings, Inventory Gardens and Designed Landscapes, and Inventory Battlefields; and
  - the PPP Application Boundary for the proposed Substation site and a 5 km Cultural Heritage Study Area for Category B Listed Buildings, Category C Listed Buildings and Conservation Areas.

9.2.2 The study areas for Cultural Heritage were agreed with HES and Aberdeenshire Council (see Section 9.4).

9.2.3 For further details on the Cultural Heritage Study Areas please refer to Volume 2, Appendix 9.1: Historic Environment Desk-Based Assessment. The study areas for Cultural Heritage are shown on Figure 9.1 and 9.2 in Annex – Figures.

## 9.3 Legislative and Policy Context

9.3.1 Relevant legislation and planning policy for Cultural Heritage is identified below.

### Legislation

9.3.2 Part 1, 4 (2) of The Town and Country Planning (Environmental Impact Assessment) (Scotland) Regulations 2017 requires that an environmental impact assessment must identify, describe and assess in an appropriate manner, in light of the circumstances relating to the proposed development, the direct and indirect significant effects of the proposed development (including, where the proposed development will have operational effects, such operational effects) on the certain factors, including cultural heritage.

9.3.3 Schedule 9, 1 of the Electricity Act 1989 requires that:

(1) In formulating any relevant proposals, a licence holder or a person authorised by exemption to [generate, [distribute, supply or participate in the transmission of] electricity]—

(a) shall have regard to the desirability of preserving natural beauty, of conserving flora, fauna and geological or geographical features of special interest and of protecting sites, buildings and objects of architectural, historic or archaeological interest; and

(b) shall do what he reasonably can to mitigate any effect which the proposals would have on the natural beauty of the countryside or on any such flora, fauna, features, sites, buildings or objects.

9.3.4 Scheduled Monuments are, by definition, of national importance and are protected by law under the Ancient Monuments and Archaeological Areas Act

1979 (as amended by the Historic Environment Scotland Act 2014). It is a criminal offence to damage a Scheduled Monument, and Scheduled Monument Consent must be obtained from HES before any works can be carried out that would have a physical impact on a Scheduled Monument.

9.3.5 Listed Buildings are protected under the Planning (Listed Buildings and Conservation Areas) (Scotland) Act 1997 (as amended by the Historic Environment Scotland Act 2014) and are recognised to be of special architectural or historic interest. Under Section 59 of the Act, in considering whether to grant planning permission for development which affects a Listed Building or its setting, a planning authority or the Secretary of State, as the case may be, shall have special regard to the desirability of preserving the building or its setting or any features of special architectural or historic interest which it possesses. Additional controls over demolition and alteration exist through the requirement for Listed Building Consent to be obtained before undertaking alterations or demolishing a Listed Building.

9.3.6 The Ancient Monuments and Archaeological Areas Act 1979 (as amended by the Historic Environment Scotland Act 2014) requires HES to compile and maintain an Inventory of Gardens and Designed Landscapes. Under Schedule 5, Paragraph 17, of the Town and Country Planning (Development Management Procedure) (Scotland) Regulations 2013, planning authorities are required to consult HES on development proposals that may affect a historic garden or designed landscape. This requirement also extends to development which may affect the site of a Scheduled Monument or its setting or a Category A Listed Building or its setting.

#### **Planning Policy**

9.3.7 The following national and regional policy is relevant to Cultural Heritage, and should be read in conjunction with the legislation, policy and guidance set out in the Planning Statement and is relevant to the assessment of effects of development on heritage assets:

- National Planning Framework 4 (Scottish Government 2023);
- Planning Advice Note 2/2011: Planning and Archaeology (PAN2/2011) (Scottish Government 2011);
- Scotland's National Marine Plan (Scottish Government 2015);
- Historic Environment Policy for Scotland (HES 2019a);
- Historic Environment Scotland Circular – Regulations and Procedures (HES 2019b);
- Designation Policy and Selection Guidance (HES 2019c); and
- Aberdeenshire Council's Local Development Plan (Adopted 13th January 2023) (Aberdeenshire Council 2023).

#### **National Planning Framework 4**

9.3.8 National Planning Framework 4 includes Policy 7 (Historic assets and places) which seeks to protect and enhance heritage assets and places, and to enable positive change as a catalyst for the regeneration of places (Scottish Government 2023a, page 45).

9.3.9 Relevant elements of Policy 7 include:

- Policy 7 a) - Development proposals with a potentially significant impact on historic assets will be accompanied by an assessment based on an understanding of the cultural significance<sup>1</sup> of the historic asset and/or place. The assessment should identify the likely visual or physical impact of any proposals, including cumulative effects and provide a sound basis for managing the impacts of change. Proposals should also be informed by national policy and guidance on managing change in the historic environment, and information held within Historic Environment Records.
- Policy 7 c) - Development proposals affecting the setting of a Listed Building should preserve its character, and its special architectural or historic interest.
- Policy 7 d) - Development proposals in or affecting conservation areas will only be supported where the character and appearance of the conservation area and its setting is preserved or enhanced. Relevant considerations include the:
  - i. architectural and historic character of the area;
  - ii. existing density, built form and layout; and
  - iii. context and siting, quality of design and suitable materials.
- Policy 7 h) - Development proposals affecting Scheduled Monuments will only be supported where:
  - i. direct impacts on the Scheduled Monument are avoided;
  - ii. significant adverse impacts on the integrity of the setting of a Scheduled Monument are avoided; or
  - iii. exceptional circumstances have been demonstrated to justify the impact on a Scheduled Monument and its setting and impacts on the monument or its setting have been minimised.
- Policy 7 i) - Development proposals affecting nationally important Gardens and Designed Landscapes will be supported where they protect, preserve or enhance their cultural significance, character and integrity and where proposals will not significantly impact on important views to, from and within the site, or its setting.
- Policy 7 o) - Non-designated historic environment assets and their setting should be protected and preserved in situ wherever feasible. Where impacts cannot be avoided they should be minimised. Where it has been demonstrated that avoidance or retention is not possible, excavation, recording, analysis, archiving, publication and activities to provide public benefit may be required through the use of conditions or legal/planning obligations. When new archaeological discoveries are made during the course of development works, they must be reported to the planning authority to enable agreement on appropriate inspection, recording and mitigation measures.

---

<sup>1</sup> NPF4 defines cultural significance as the aesthetic, historic, scientific or social value for past, present or future generations. Cultural significance can be embodied in a place itself, its fabric, setting, use, associations, meanings, records, related places and related objects.

***Planning Advice Note 2/2011: Planning and Archaeology***

9.3.10 PAN 2/2011: Planning and Archaeology (Scottish Government 2011) provides advice on archaeological remains within the planning process. It sets out the requirement to protect archaeological remains in a manner which is proportionate to the relative value of the remains and of the developments under consideration.

***Scotland's National Marine Plan: A Single Framework for Managing Our Seas***

9.3.11 Scotland's National Marine Plan (Scottish Government 2015) provides a framework for development within marine areas including the surviving physical remains of past human activity, whether visible, buried or submerged and promotes the consideration of the marine historic environment and the setting of coastal heritage assets as part of the development process. General Planning Principle (GEN) 6 (Historic Environment) states "*development and use of the marine environment should protect and, where appropriate, enhance heritage assets in a manner proportionate to their significance*" (Scottish Government 2015, page 19).

***Historic Environment Policy for Scotland***

9.3.12 The Historic Environment Policy for Scotland (HES 2019a) sets out the six principles of how the historic environment should be managed and looked after, and forms part of a range of documents that inform decision-makers in the Scottish planning system.

***Historic Environment Scotland Circular – Regulations and Procedures***

9.3.13 Historic Environment Scotland Circular - Regulations and Procedures (HES 2019b) describes the requirements of primary legislation amended by, and secondary legislation introduced under, the Historic Environment Scotland Act 2014 and HES's role in relation to listing and scheduling, consents and appeals.

***Designation Policy and Selection Guidance***

9.3.14 The Designation Policy and Selection Guidance document (HES 2019c) supports Historic Environment Policy for Scotland (HES 2019a) and sets out the policy and selection guidance used by HES to designate historic sites and places at the national level.

***Aberdeenshire Local Development Plan 2023***

9.3.15 Aberdeenshire Council's Local Development Plan (Adopted 13th January 2023) (Aberdeenshire Council 2023) includes a number of policies which seek to protect the historic environment and enhance heritage assets during development. The relevant policies in relation to the heritage assets include:

- Policy HE1 Protecting Listed Buildings, Scheduled Monuments and Archaeological Sites (including other historic buildings)
  - Policy HE1.1 states Aberdeenshire Council will resist development that would have an adverse impact on the character, integrity or setting of listed buildings, or scheduled monuments, or other archaeological sites. If adverse impact is unavoidable, it should be minimised and justified.

- Policy HE1.2 states Aberdeenshire Council will protect all listed buildings contained on the statutory list of Buildings of Special Architectural or Historic Interest for Aberdeenshire, all scheduled monuments contained on the statutory schedule of Monuments for Aberdeenshire and undesignated archaeological sites in Aberdeenshire. We will encourage their protection, maintenance, enhancement, and appropriate active use and conservation.
- Policy HE1.5 states that development on nationally or locally important monuments or archaeological sites, or having an adverse impact on the integrity of their setting, will only be allowed if there are exceptional circumstances, including those of a social or economic nature, and there is no alternative site. It is the developer's responsibility to provide information on the nature and location of the archaeological features, including details of any mitigation measures proposed, prior to determination of the planning application.
- Policy HE1.6 states where preservation of the site in its original location is not possible, the developer must arrange for the full excavation and recording of the site in advance of development to satisfy Aberdeenshire Council that the impacts from development have been fully mitigated.
- Policy HE2 Protecting Historic, Cultural and Conservation Areas
  - Policy HE2.1 states the Council will resist development, including change of use or demolition, which would fail to preserve or enhance the character or appearance of a conservation area. This applies both to developments within the conservation area and proposals outwith that would affect its character or appearance. We will seek retention, restoration, and sympathetic adaptation of unlisted buildings which contribute positively to the special architectural or historic interest of the area, in preference to allowing their demolition.
  - Policy HE2.3 states development affecting an inventory garden and designed landscape will only be permitted if:
    - the proposal would not have an adverse impact that compromises the objectives of the designation of an inventory garden or designed landscape; or,
    - any significant adverse effects are outweighed by long-term social or economic benefits of overriding public importance and there is no alternative site for the development.
  - Policy 2.4 states that all development affecting the character and/or the appearance of an inventory garden and designed landscape must be justified through a Design Statement and/or Landscape Management Plan.

### **Best Practice Guidance**

- 9.3.16 The Cultural Heritage assessment has been prepared in accordance with the guidance provided in Environmental Impact Assessment Handbook Guidance for competent authorities, consultation bodies, and others involved in the

Environmental Impact Assessment process in Scotland (Scottish Natural Heritage and HES 2018) as well as the following documents:

- Scottish Government, 2023b, Our Past, Our Future The Strategy for Scotland's Historic Environment;
- Chartered Institute for Archaeologists (CIfA), 2020a, Standard and Guidance for Historic Environment Desk-based Assessment;
- CIfA, 2022, Code of Conduct: professional ethics in archaeology;
- HES, 2016a, Managing Change in the Historic Environment: Setting; and
- HES, 2016b, Managing Change in the Historic Environment: Gardens and Designed Landscapes.

## **9.4 Consultation**

9.4.1 The approach to consultation for the Proposed Development is set out in Volume 1, Chapter 4: Stakeholder Engagement and Consultation. A summary of the issues specific to Cultural Heritage raised during consultation is presented in Table 9.1, together with how these issues have been considered in the production of this EIA chapter.

**Table 9.1: Summary of key consultation issues raised during consultation activities undertaken for the Proposed Development relevant to Cultural Heritage**

Date	Consultee and Type of Consultation	Summary of Issue(s) Raised	Response to Issue Raised and/or Where Considered in this Chapter
<b>August 2025</b>	Pre-Application Consultation Events	Potential WWII Aircraft Remains and Associated Contamination	No WWII aircraft remains were identified within the Cultural Heritage Study Area. If previously unknown WWII aircraft remains are identified these would be protected under the Protection of Military Remains Act 1986. Should any such remains be identified additional consultation with the Ministry of Defence and Aberdeenshire Council would be undertaken, and a licence would be required from the Joint Casualty and Compassionate Centre before any disturbance of the remains could be undertaken. Where possible, any such remains would be avoided through design and / or micro-siting of associated elements of the Proposed Development.
<b>21st October 2024</b>	Historic Environment Scotland (HES) Scoping Opinion	In their Scoping Opinion HES stated that they were content that the proposed 3 km buffer from the proposed Substation was sufficient for the assessment of impacts upon the setting of nationally important heritage assets given the likely scale of the proposed substation.	A 3 km study area for the proposed Substation was used for World Heritage Sites, Scheduled Monuments, Category A Listed Buildings, Inventory Gardens and Designed Landscapes, and Inventory Battlefields (see paragraph 9.2.3 above).
		HES confirmed they were also content that the assessment of impacts on heritage assets will be undertaken with reference to the EIA Handbook and Managing Change in the Historic Environment Setting Guidance.	The assessment of effects for Cultural Heritage has been undertaken based on professional judgement guided by the criteria provided in Environmental Impact Assessment Handbook Guidance for competent authorities, consultation bodies, and others involved in the Environmental Impact Assessment process in Scotland (Scottish Natural Heritage and HES 2018). The assessment of setting has been undertaken based on the guidance provided by Managing Change in the Historic Environment: Setting. Please refer to Section 9.5.
		HES identified they strongly recommend design of the Proposed Development avoids any direct impacts on nationally important heritage assets, in line with national policies, and that	The design of the Proposed Development has been developed to avoid direct impacts on nationally important heritage assets or impacts on the setting of these assets (see Volume 2, Appendix 9.2: Assessment of Non-Significant Cultural Heritage Effects).

Date	Consultee and Type of Consultation	Summary of Issue(s) Raised	Response to Issue Raised and/or Where Considered in this Chapter
		<p>efforts are made to minimise any impacts on the setting of these assets.</p> <p>Careful consideration should also be given to reducing and avoiding impacts on the setting of heritage assets during the design process.</p>	<p>No likely effects (significant or non-significant) on designated heritage assets were assessed.</p> <p>Details of embedded mitigation, including design developments which contribute to the reduction of impact on the setting of heritage assets, are presented in Section 9.8.</p>
		<p>HES recommended the use of visualisations where initial assessment identifies potential significant impacts on an asset.</p>	<p>Given no significant effects on setting were identified, no visualisations were produced to support the assessment for Cultural Heritage.</p>
		<p>HES confirmed they were content with the embedded mitigation outlined in Section 11.6 of the Scoping Report.</p>	<p>Embedded mitigation relevant to Cultural Heritage is presented in Section 9.8.</p>
<p><b>18th September 2024</b></p>	<p>2024 Bowdun Scoping Opinion (Aberdeenshire Council, 2024)</p>	<p>In their Scoping Opinion Aberdeenshire Council Built Heritage identified:</p> <p>they would expect historic assets within 5 km to be assessed for potential impacts once the exact location of the cable corridor and substation is known. The resultant report should include a Zone of Theoretical Visibility (ZTV) and a Landscape Visual Impact Assessment (LVIA) study area.</p>	<p>Responses to these comments were provided to Aberdeenshire Council Built Heritage in an email (1<sup>st</sup> May 2025). In summary:</p> <p><b>Cable Corridor:</b> Given construction phase impacts will be short or medium term and potentially transient or intermittent these impacts are considered unlikely to be significant, therefore construction phase impacts relating to setting for non-designated heritage assets were scoped out of the EIAR and it is proposed impacts on the setting of Category B and C Listed Buildings and Conservation Areas are similarly scoped out. Significant effects resulting from the operation of Cable Corridor would also be localised i.e. on receptors immediately adjacent to the Cable Corridor. As such a 5 km study area is not considered proportionate to the potential for significant effects and a 250 m study area from the PPP Application Boundary for the Cable Corridor is therefore proposed.</p> <p><b>Substation:</b></p>

Date	Consultee and Type of Consultation	Summary of Issue(s) Raised	Response to Issue Raised and/or Where Considered in this Chapter
			While there is there is the potential for significant effects on the settings of built heritage receptors resulting from construction and operation of the Substation, a 3 km study area from the PPP Application Boundary is proposed to align with the 3 km study area proposed in the scoping study and accepted by HES (see above).
		Photomontage visualisations would also be expected for any assets identified within the assessment which could be impacted as a result of the proposed works.	Given no likely significant effects on setting were identified, no visualisations were produced to support the assessment for Cultural Heritage.
		Built Heritage need to be satisfied that there is limited potential for the development to impact on any nationally designated heritage asset.	No effects on designated heritage assets were identified.
<b>10th June 2025</b>	Aberdeenshire Council Built Heritage's Response to email (dated 1 <sup>st</sup> May 2025)	In their response Aberdeenshire Council Built Heritage confirmed they were content with the proposed 250 m study area for the cable corridor. However, they identified a 5 km study area for the substation would be required.	A 5 km study area for the proposed Substation was used for Category B Listed Buildings, Category C Listed Buildings and Conservation Areas (see paragraph 9.2.3 above).
<b>8th June 2024</b>	2024 Bowdun Scoping Opinion (Aberdeenshire Council, 2024)	In their Scoping Opinion Aberdeenshire Council Archaeology Service confirmed they were content with the embedded mitigation and assessment methodology proposed, including the aspects that had been scoped in and out of the assessment.	The assessment methodology proposed in the Scoping Report (revised in response to comments received from Aberdeenshire Council Built Heritage) was used. The assessment methodology is detailed in Section 9.5. Embedded mitigation relevant to Cultural Heritage is presented in Section 9.8.
		Aberdeenshire Council Archaeology Service, identified any proposed compensatory planting zones would need to be subject to a cultural heritage assessment.	An appropriate area of compensatory woodland planting for the Proposed Development will be confirmed during the Matters Specified in Conditions (MSC) stage. This will include a cultural heritage assessment for the identified area(s).

## 9.5 Methodology for Assessment of Effects

### Sensitivity

- 9.5.1 Baseline conditions were established through a desk-based survey, targeted walkover survey and site inspection. Please refer to Volume 2, Appendix 9.1: Historic Environment Desk-Based Assessment for information on the sources consulted.
- 9.5.2 For all three sub-topics (archaeological remains, historic buildings and the historic landscape), an assessment of the sensitivity of each heritage asset was undertaken on a three-point scale of High, Medium, and Low, based on professional judgement and guided by the criteria provided in Environmental Impact Assessment Handbook Guidance for competent authorities, consultation bodies, and others involved in the Environmental Impact Assessment process in Scotland (Scottish Natural Heritage and HES 2018) as presented in Table 9.2.

**Table 9.2: Criteria to assess the sensitivity of archaeological remains, historic buildings and Historic Landscape Types (HLTs)**

Sensitivity	Guideline Criteria
<b>High</b>	Heritage assets valued at an international or national level, e.g. World Heritage Sites, Scheduled Monuments, Category A Listed Buildings, Inventory Gardens and Designed Landscapes, Inventory Battlefields, historic marine protected areas, some Conservation Areas and non-designated heritage assets that meet the criteria for designation in the opinion of the assessor. Category B or C Listed Buildings where the existing designation does not adequately reflect their value, in the opinion of the assessor.
<b>Medium</b>	Heritage assets valued at a regional level, e.g. Category B Listed Buildings, some Conservation Areas and non-designated heritage assets of similar value in the opinion of the assessor. Category C Listed Buildings where the existing designation does not adequately reflect their value, in the option of the assessor.
<b>Low</b>	Heritage assets valued at a local level, e.g. Category C Listed Buildings, some Conservation Areas and non-designated heritage assets of similar value in the opinion of the assessor.

### Magnitude of Impact

- 9.5.3 Magnitude of impact is the degree of change that would be experienced by a heritage asset and (where relevant) its setting resulting from the construction or operation of the Proposed Development, as compared with a ‘do-nothing’ scenario. Magnitude of impact is assessed without reference to the sensitivity of the heritage asset and may include physical effects, or effects on setting or amenity value.
- 9.5.4 Assessment of impact magnitude was based on professional judgement informed by the criteria for archaeological remains, historic buildings and the historic landscape presented in Table 9.3. In addition to the four-point scale of Substantial, Moderate, Minor or Negligible identified in Appendix 1 Figure 1 of the Environmental Impact Assessment Handbook Guidance for competent authorities, consultation bodies, and others involved in the Environmental Impact Assessment process in Scotland (Scottish Natural Heritage and HES 2018) for the assessment of magnitude of impact, a magnitude of impact of

‘None’ was used where there would be no change to the elements of the fabric or setting of a heritage asset that contribute to its cultural significance.

**Table 9.3: Magnitude of impact on heritage assets**

Magnitude	Guideline Criteria	
	Adverse	Beneficial
<b>Substantial</b>	Changes to the fabric or setting of a heritage asset resulting in the complete or near complete loss of its cultural significance, such that it may no longer be considered a heritage asset.	Preservation of the heritage asset in situ where it would be completely or almost completely lost in the do-nothing scenario.
<b>Moderate</b>	Changes to the elements of the fabric or setting of the heritage asset that contribute to its cultural significance that it is substantially altered.	Changes to key elements of the heritage asset’s fabric or setting that result in its cultural significance being preserved, where they would otherwise be lost, or restored.
<b>Slight</b>	Changes to elements of the fabric or setting of the heritage asset that contribute to its cultural significance such that it is slightly altered.	Changes that result in elements of the heritage asset’s fabric or setting that detract from its cultural significance being removed.
<b>Negligible or None</b>	Changes to fabric or setting that leave significance unchanged or there are no predicted changes.	

### Significance of Effect

- 9.5.5 As stated in paragraph C.7.12 of the Environmental Impact Assessment Handbook Guidance for competent authorities, consultation bodies, and others involved in the Environmental Impact Assessment process in Scotland, each EIA will require its own matrix designed to meet the particular circumstances of a project (Scottish Natural Heritage and HES 2018, pp. 72).
- 9.5.6 The example matrix provided in Figure 6 of EIA Handbook Guidance (Scottish Natural Heritage and HES 2018, pp. 75) was therefore adapted for the Proposed Development.
- 9.5.7 Significance of effect was assessed on a five-point scale of Major, Moderate, Minor, Negligible, or None using professional judgement informed by the matrix illustrated in Table 9.4. Major, Moderate, Minor, Negligible significance of effects apply both to adverse or beneficial effects.

**Table 9.4: Matrix for determination of Significance of Effect**

Sensitivity	Magnitude of Impact			
	Substantial	Moderate	Slight	Negligible or None
High	Major	Major	Moderate	Negligible or None
Medium	Major	Moderate	Minor	Negligible or None
Low	Moderate	Minor	Minor	Negligible or None

9.5.8 For the purposes of this assessment, effects of Moderate or greater significance are considered to be significant in the context of the EIA Regulations.

**Effects on Setting**

9.5.9 Setting is defined by Managing Change in the Historic Environment: Setting as *‘the way the surroundings of a historic asset or place contribute to how it is understood, appreciated and experienced’* (HES 2016a, pp. 6). Based on the guidance provided by Managing Change in the Historic Environment: Setting, a three-stage process was undertaken to assess the effect of the Proposed Development on the setting of heritage assets:

- Stage 1: designated heritage assets where the setting may be affected by the Proposed Development were identified. As noted in Table 9.1, the study areas for this were agreed with HES and Aberdeenshire Council Built Heritage.
- Stage 2: modern Ordnance Survey mapping and online aerial photography, along with a walkover survey and a site inspection, including windshield survey, were used to establish the setting of heritage assets. Information on the setting of heritage assets is presented in Volume 2, Appendix 9.1: Historic Environment Desk-Based Assessment.
- Stage 3: the potential impact of the Proposed Development on the setting of heritage assets was then assessed. The results of the assessment are presented in Volume 2, Appendix 9.2: Assessment of Non-Significant Cultural Heritage Effects.

**Effects on Inventory Gardens and Designed Landscapes**

9.5.10 Based on the guidance provided by Managing Change in the Historic Environment: Gardens and Designed Landscapes (HES 2016b, pp. 10-16), a three-stage process was undertaken to assess potential effects on Inventory Gardens and Designed Landscapes included in the cultural heritage baseline:

- Stage 1: the baseline of the Inventory Gardens and Designed Landscapes included in the cultural heritage baseline was established. This was achieved through a review of existing information on these heritage assets including their Inventory descriptions (HES n.d.a; b).
- Stage 2: potential impacts on setting were then assessed.

- Stage 3: mitigation measures were not required as no potential effects were predicted for these heritage assets.

### **Inter-Related Effects**

- 9.5.11 The potential for inter-related cumulative effects (see Volume 1, Chapter 3: EIA Methodology) were considered as part of the assessment presented in Section 9.9 and Volume 2, Appendix 9.2: Assessment of Non-Significant Cultural Heritage Effects. No inter-related cumulative effects were assessed.

### **Cumulative Effects Assessment**

- 9.5.12 The Cumulative Effects Assessment (CEA) assesses the impact associated with the Proposed Development together with other relevant projects and activities. Cumulative effects are defined as the effect of the Proposed Development in combination with the effects from a number of different projects, on the same receptor or resource. Further details on CEA methodology are provided in Volume 1, Chapter 3: EIA Methodology.
- 9.5.13 For Cultural Heritage cumulative effects arise where the Proposed Development and other EIA developments (see Volume 1, Chapter 3: EIA Methodology) have the potential to affect the same heritage asset. This can be as a result of the following:
- physical overlap of the Proposed Development with other projects; and/or
  - temporal overlap of the Proposed Development with other projects.
- 9.5.14 Potential cumulative effects of the Proposed Development in combination with other reasonably foreseeable developments, are assessed in Section 9.11.

### **Assumptions and Limitations**

- 9.5.15 The scope of the assessment was agreed with HES and Aberdeenshire Council (see Section 9.4 above) and allows robust assessment of sensitivity, magnitude of impact and significance of effect for the purposes of EIA.
- 9.5.16 While land access was not available for all areas, the walkover survey, in combination with the results of the desk-based assessment, including a review of LiDAR data, provide sufficient information for the assessment of effect.

## **9.6 Key Parameters for Assessment**

### **Maximum Design Scenario**

- 9.6.1 The Maximum Design Scenario (MDS) identified in Table 9.5 are those parameters expected to have the potential to result in the greatest effect on an identified receptor or receptor group. Any other development scenario within the Project Design Envelope (PDE), will result in the same, or less, level of environmental effect. The scenario has been selected from the details provided in Volume 1, Chapter 2: The Proposed Development.

**Table 9.5: Maximum Design Scenario Considered for Each Potential Impact as Part of the Assessment of Likely Significant Environmental Effects on Cultural Heritage**

Potential Impact	Phase			Maximum Design Scenario
	C	O&M	D	
<b>Removal of known heritage assets and previously unknown archaeological remains</b>	Y	-	-	While the 220/275 kV Cable Corridor may be subject to some localised changes during further detailed design development, it is anticipated it will not substantially change from the indicative centre line presented on Figure 9.1 and 9.2 in Annex – Figures.
<b>Removal of known heritage assets and previously unknown archaeological remains</b>	Y	-	-	The temporary working width for the 220/275 kV Cable Corridor is anticipated to be no greater than 50 m for open cut installation during construction.
<b>Removal of known heritage assets and previously unknown archaeological remains</b>	Y	-	-	A temporary working width for the 400 kV Cable Corridor with an open cut installation is anticipated to be no greater than 35 m during construction.
<b>Removal of known heritage assets and previously unknown archaeological remains</b>	Y	-	-	The maximum size of the Horizontal Directional Drilling (HDD) compounds will be no greater than 70 m by 50 m (Launch Pit) and 40 m by 50 m (Receiver Pit).
<b>Removal of known heritage assets and previously unknown archaeological remains</b>	Y	-	-	The Substation site will be a maximum of 42 ha with the Substation Switchyard no greater than 10 ha.
<b>Visual intrusion on the setting of heritage assets</b>	-	Y	-	The only remaining visible element in the Cable Corridor will be manhole covers granting access to link boxes for inspection purposes with the permanent Cable Corridor for both the 220/275 kV and 400 kV cables reinstated to previous land use, including replanting.
<b>Noise and visual intrusion on the setting of heritage assets</b>	-	Y	-	The substation will comprise a maximum of 3 buildings up to 15 m in height. Noise generating plant will be contained within buildings (see Section 14.9 in Volume 1, Chapter 14: Noise and Vibration). The Substation site will be screened where possible by earthwork bunds and landscape and ecological planting (see Volume 1, Chapter 8: Landscape and Visual).

### **Impacts Scoped Out of the Assessment**

- 9.6.2 On the basis of the baseline environment and the Project Description outlined in Volume 1, Chapter 2: The Proposed Development, a number of impacts were scoped out of the assessment for Cultural Heritage. These were proposed to be scoped out in the Scoping Report (TWP 2024) and no concerns were raised by key consultees within the Scoping Opinion. The scope of the assessment was agreed with HES and Aberdeenshire Council (see Table 9.1 above).
- 9.6.3 These impacts are outlined, together with a justification for scoping them out, in Table 9.6.

**Table 9.6: Impacts Scoped Out of the Assessment for Cultural Heritage**

Potential Impact	Phase			Justification
	C	O&M	D	
<b>Construction phase impacts relating to setting</b>	Y	-	-	Construction phase impacts relating specifically to setting will be short or medium term and potentially transient or intermittent. Given this, such impacts are considered unlikely to be significant.
<b>Accidental construction phase impacts</b>	Y	-	-	Such impacts may occur as a result of uncontrolled plant movement or excavation. They will be prevented through measures specified in a Construction Environmental Management Plan (CEMP), such as fencing off heritage assets considered to be at risk of accidental damage.
<b>Operational impacts on designated heritage assets outside the Cultural Heritage Study Area</b>	-	Y	-	Given the nature of the Proposed Development and the existing landscape, whilst there is the potential that the Substation will be visible from heritage assets beyond the Cultural Heritage Study Area, there is no potential for this to result in significant effects. This is because as at such distances in excess of 3 km the Substation will constitute a small visual change in their setting and has no potential to substantively affect their cultural significance.
<b>Operational impacts relating to the setting of non-designated heritage assets of less than national importance</b>	-	Y	-	Operational effects in respect of these heritage assets are unlikely to be significant. Regional to local importance assets are assessed to have medium to low sensitivity. As operational impacts only relate to the setting of non-designated assets it is unlikely to result in an impact of sufficient magnitude to yield a significant effect given the embedded mitigation.
<b>Decommissioning phase impacts</b>	-	-	Y	It is assumed that decommissioning will disturb only ground that has been disturbed during the construction phase and hence no potential to affect archaeological remains. Decommissioning phase impacts relating specifically to setting will be short or medium term and potentially transient or intermittent. Given this, such impacts are considered unlikely to be significant. A separate decommissioning plan will be submitted when required which will review potential impacts.

## 9.7 Baseline Environment

### Overview of Baseline Environment

- 9.7.1 From the sources identified in Volume 2, Appendix 9.1: Historic Environment Desk-Based Assessment, a total of 203 heritage assets were considered as part of the baseline comprising 117 archaeological remains, 73 historic buildings and 13 HLTs.
- 9.7.2 A summary of the total number of heritage assets and their sensitivity is provided in Table 9.7. The locations of these heritage assets are shown on Figure 9.1 and 9.2 in Annex – Figures.

**Table 9.7: Total numbers of heritage assets assessed as part of the Cultural Heritage baseline**

Sensitivity	Low	Medium	High	Total
Sub-topic				
<b>Archaeological Remains</b>	76	37	4 (all Scheduled Monuments)	117
<b>Historic Buildings</b>	47 (including 13 Category C Listed Buildings)	24 (including 14 Category B Listed Buildings, 3 Category C Listed Buildings and 1 Conservation Area)	2 (comprising 2 Category A Listed Buildings)	73
<b>Historic Landscape Types (HLTs)</b>	9	2	2 (comprising 2 Inventory of Gardens and Designed Landscapes)	13
<b>Total</b>	132	63	8	203

- 9.7.3 Baseline information on all heritage assets considered as part of the Cultural Heritage baseline is presented in Volume 2, Appendix 9.1: Historic Environment Desk-Based Assessment.
- 9.7.4 Baseline information on the heritage assets for which potentially significant effects have been assessed (see Section 9.9) is also summarised in this section.

### Designated Heritage Assets

- 9.7.5 A total of 39 designated heritage assets were assessed as part of the Cultural Heritage baseline. These comprised:
- four Scheduled Monuments;
  - two Category A Listed Buildings;
  - 14 Category B Listed Buildings;
  - 16 Category C Listed Buildings;
  - One Conservation Area; and
  - two Inventory of Gardens and Designed Landscapes.
- 9.7.6 Baseline information for designated heritage assets is presented in Volume 2, Appendix 9.1: Historic Environment Desk-Based Assessment.

## **Non-Designated Heritage Assets**

### ***Archaeological Remains***

- 9.7.7 A total of 113 non-designated archaeological remains were assessed as part of the Cultural Heritage baseline. Baseline information for these non-designated archaeological remains is presented in Volume 2, Appendix 9.1: Historic Environment Desk-Based Assessment.
- 9.7.8 Baseline information for the seven non-designated archaeological remains on which a significant effect was assessed is also presented below.
- 9.7.9 Haughs of Benholm Cropmarks (Asset 5), Nether Beholm Cropmark (Asset 9), Mains of Benholm Cropmark (Asset 23) and Peattie Enclosure (Asset 47) are possible enclosures of Prehistoric date identified from modern satellite imagery (GoogleEarth). None of these heritage assets correspond with any features depicted on historic Ordnance Survey mapping and therefore could pre-date these editions. In some instances other potentially associated features, such as the possible pits associated with Asset 47, were located within or close to these cropmarks. In addition, two circular features (Kirkton, Pits; Asset 53), measuring approximately 2 m in diameter, were identified from aerial imagery located on a terrace above the Bervie Water<sup>2</sup> and interpreted as possible pits of unknown date.
- 9.7.10 Broombank Enclosure (Asset 92) comprises a square feature also identified from modern satellite imagery (GoogleEarth 12/2010). Asset 92 was interpreted as a possible enclosure measuring approximately 110 m across. No corresponding features were identified on historic Ordnance Survey mapping (6" to 1 mile, Kincardineshire Sheet XX, 1868), therefore this heritage asset could pre-date this edition.
- 9.7.11 While their interpretation is tentative, given these heritage assets have the potential to contribute to the understanding of prehistoric activity within the Cultural Heritage Study Area they have been assessed to be of Medium sensitivity.
- 9.7.12 Hurlie Bog, Hollow Way (Asset 154) comprises the remains of a hollow way (a way, path or road through a cutting) depicted as a track on historic Ordnance Survey mapping (6" to 1 mile, Kincardineshire Sheet XI, 1868). While not visible on LiDAR, a very ephemeral linear feature was identified during the walkover survey in this location, bisected by a modern forestry track. While these heritage assets contribute to the understanding of past activity at a local level they are not rare types and therefore, Asset 154 have been assessed to be of Low sensitivity.

### ***Historic Buildings and the Historic Landscape***

- 9.7.13 A total of 40 non-designated historic buildings and 11 non-designated HLTs were included in the Cultural Heritage baseline. Baseline information for these non-designated historic buildings and HTS is presented in Volume 2, Appendix 9.1: Historic Environment Desk-Based Assessment.

---

<sup>2</sup> <https://www.trove.scot/place/346227#images-1>

### Future Baseline Scenario

- 9.7.14 The EIA Regulations require that ‘a description of the relevant aspects of the current state of the environment (baseline scenario) and an outline of the likely evolution thereof without implementation of the project as far as natural changes from the baseline scenario can be assessed with reasonable effort, on the basis of the availability of environmental information and scientific knowledge’ is included within the EIA Report.
- 9.7.15 If the Proposed Development does not come forward, an assessment of the ‘without development’ future baseline conditions have also been carried out and is described within Section 4 of Volume 2, Appendix 9.1: Historic Environment Desk-Based Assessment.

## 9.8 Embedded Measures and Mitigation

- 9.8.1 As part of the Proposed Development design process, a number of embedded measures have been proposed to reduce the potential for impacts on Cultural Heritage (see Table 9.8). They are considered at every stage of the Proposed Development through design and best practice and, as there is a commitment to implementing these measures, these have been considered in the assessment presented in Section 9.9 (i.e. the determination of magnitude and therefore significance assumes implementation of these measures).

**Table 9.8: Embedded Measures Adopted as Part of the Proposed Development**

Mitigation Reference	Embedded Measures Adopted as Part of the Proposed Development	Justification
GEN1	<p>Adoption of design measures that limit or reduce impacts on cultural heritage.</p> <p>Designated Heritage Assets were mapped as ‘hard’ constraints that must be avoided during the identification of the cable corridor and for other elements of the construction footprint.</p> <p>Avoidance of demolition of buildings and/or standing structures.</p> <p>Design of the Substation has been developed to reduce noise and visual intrusion, through selection of equipment and incorporation of enclosures to reduce noise breakout.</p> <p>In addition, landscaping and planting will be used for visual screening of the substation buildings.</p> <p>An area to accommodate construction of the Substation and retention of the surrounding woodland for screening has been proposed for purchase to Forestry and Land Scotland for the Proposed Development. Relevant management plans will take account of the aim to retain the woodland for screening e.g. Biodiversity Enhancement Plan, Landscape and Design Management Plan, Forestry and woodland management, etc.</p> <p>Reinstatement to previous land use, including field boundaries, ground cover and topography on the cable corridor will be reinstated to pre-construction conditions as far as possible.</p>	<p>Adoption of design measures that limit or reduce impacts on cultural heritage, including reduction of potential for visual and noise impacts on the setting of heritage assets during operation.</p>

Mitigation Reference	Embedded Measures Adopted as Part of the Proposed Development	Justification
	<p>Use of existing access tracks in the Proposed Development PPP Application Boundary for construction of the Proposed Development. The PPP Application Boundary incorporates existing accesses, and those to be utilised for the construction of the GCP proposed by SSEN-T thereby limiting upgrading works that would need to be carried out and ground disturbance. Including:</p> <ul style="list-style-type: none"> <li>• Use the existing forestry track to cross Cowie Line, Pillbox and Earthworks 945m SW of Stonehouse (Asset 158), a Scheduled Monument.</li> </ul>	<p>To avoid ground disturbance that could result in a direct (physical) impact on known and previously unknown archaeological remains during construction.</p>
<p><b>GEN2</b></p>	<p>Production of a Construction Environmental Management Plan (CEMP) which includes the following measures: During construction vehicles will remain on the existing access tracks. This will aim to avoid ground disturbance that could result in a direct (physical) impact on known and previously unknown archaeological remains during construction. Where heritage assets are located within the PPP Application Boundary, but where no works are proposed, exclusion zones will be established around these heritage assets. These areas would be defined as a minimum of 3 m buffers extending from the heritage asset as defined by the HER and would be securely demarcated with appropriate signage. Works will only be undertaken within these areas after consultation with the local authority archaeologist.</p>	<p>To prevent accidental damage to heritage assets during construction.</p> <p>To avoid direct (physical) effects on designated heritage assets during construction.</p> <p>To avoid or reduce direct (physical) effects on known heritage assets during construction.</p>

## 9.9 Assessment of Significance

9.9.1 Table 9.5 summarises the potential significant effects resulting from the Proposed Development. Where significant effects have been assessed, these are presented in this section. Where effects have been assessed to be non-significant, or no impact has been assessed, these are presented in Volume 2, Appendix 9.2: Assessment of Non-Significant Cultural Heritage Effects.

9.9.2 No likely effects have been assessed for designated heritage assets during either the construction phase or operation and maintenance phase.

### Construction Phase

#### Archaeological Remains

9.9.3 Construction of the Proposed Development would permanently remove Nether Beholm Cropmark (Asset 9), Kirkton, Pits (Asset 53) and Broombank Enclosure (Asset 92) which have been assessed to be of Medium sensitivity. During construction the magnitude of this impact has been assessed to be substantial and the significance of effect **Major adverse** (significant in EIA terms).

9.9.4 Construction of the Proposed Development would permanently remove the majority of Hurlie Bog, Hollow Way (Asset 154) which have been assessed to be of Low sensitivity. During construction the magnitude of this impact has been

assessed to be substantial and the significance of effect **Moderate adverse** (significant in EIA terms).

9.9.5 Construction of the Proposed Development would permanently remove approximately half of Haughs of Benholm Cropmarks (Asset 5), Mains of Benholm Cropmark (Asset 23) and Peattie Enclosure (Asset 47) which have been assessed to be of Medium sensitivity. During construction the magnitude of this impact has been assessed to be moderate and the significance of effect **Moderate adverse** (significant in EIA terms).

9.9.6 Construction of the Proposed Development may also result in direct (physical) effects on any previously unknown archaeological remains that may be present within areas of ground disturbance within the PPP Application Boundary.

9.9.7 A total of eight non-significant effects on archaeological remains during the construction phase have been identified. Please refer to Volume 2, Appendix 9.2: Assessment of Non-Significant Cultural Heritage Effects for the assessment of non-significant effects on archaeological remains.

#### ***Historic Buildings and the Historic Landscape***

9.9.8 A total of five non-significant effects on historic buildings and the historic landscape during the construction phase have been identified. An assessment of these is presented in Volume 2, Appendix 9.2: Assessment of Non-Significant Cultural Heritage Effects.

#### ***Additional mitigation and residual effect***

9.9.9 Mitigation and an assessment of residual effect for heritage assets on which a significant effect has been assessed is presented in Table 9.9. Mitigation for non-significant effects and an assessment of residual effects is presented in Volume 2, Appendix 9.2: Assessment of Non-Significant Cultural Heritage Effects.

9.9.10 All mitigation will be undertaken in accordance with a Project Design that will be developed in consultation with Aberdeenshire Council and relevant guidance provided by the ClfA, HES and Historic England including:

- Standard and guidance for archaeological geophysical survey (ClfA, 2020b);
- Standard and Universal guidance for archaeological field evaluation (ClfA, 2023a; 2023b);
- Standard and Universal guidance for archaeological excavation (ClfA, 2023c; 2023d); and
- Understanding the Archaeology of Landscapes: A Guide to Good Recording Practice (Second Edition) (Historic England, 2017).

9.9.11 All mitigation measures will include a programme of assessment, reporting, analysis, publication dissemination of results commensurate with the value of the heritage assets affected. This will include the preparation of reports which will be submitted to the Aberdeenshire Historic Environment Record (HER) and the National Record of the Historic Environment (NRHE), along with ordered archives which will be submitted to an appropriate repository.

9.9.12 The recording works in advance of and during construction and the dissemination of the information recorded would reduce the magnitude of impact through recording works in advance of or during construction, reducing the loss of information that would otherwise occur if a site were to be damaged or destroyed unrecorded.

*Archaeological Remains*

9.9.13 Archaeological geophysical survey and archaeological trial trenching will also be undertaken in suitable areas where physical disturbance would result from construction of the Proposed Development. Archaeological excavation would be undertaken of archaeological remains identified by the archaeological trial trenching (CH9).

9.9.14 After mitigation, no significant residual effects are anticipated for Cultural Heritage. An assessment of the residual effects for the heritage assets assessed in this chapter are presented in Table 9.9.

**Operation and Maintenance Phase**

9.9.15 A total of four non-significant effects on heritage assets during the operation and maintenance phase were identified. An assessment of these is presented in Volume 2, Appendix 9.2: Assessment of Non-Significant Cultural Heritage Effects.

Table 9.9: Potential significant effects arising from the construction phase of the Proposed Development

Ref.	Asset Number	Asset Name	Designation	Sensitivity	Duration	Adverse / Beneficial	Impact	Magnitude of Impact	Significance of effect	Mitigation (Where it is not possible to avoid effects though further detailed design development)	Residual Magnitude of Impact	Residual Significance of Effect
CH8	5	Haughs of Benholm Cropmarks	None	Medium	Permanent	Adverse	Construction of the Proposed Development would permanently remove approximately half of this heritage asset.	Moderate	Moderate	Archaeological excavation informed by archaeological field walking, archaeological geophysical survey and archaeological trial trenching in advance of construction	Negligible	Negligible
CH8	9	Nether Benholm Cropmark	None	Medium	Permanent	Adverse	Construction of the Proposed Development would wholly remove this heritage asset.	Substantial	Major	Archaeological excavation informed by archaeological field walking, archaeological geophysical survey and archaeological trial trenching in advance of construction	Slight	Minor
CH8	23	Mains of Benholm Cropmark	None	Medium	Permanent	Adverse	Construction of the Proposed Development would permanently remove a portion of this heritage asset.	Moderate	Moderate	Archaeological excavation informed by archaeological field walking, archaeological geophysical survey and archaeological trial trenching in advance of construction	Negligible	Negligible
CH8	47	Peattie Enclosure	None	Medium	Permanent	Adverse	Construction of the Proposed Development would permanently remove approximately half of this heritage asset.	Moderate	Moderate	Archaeological excavation informed by archaeological field walking, archaeological geophysical survey and archaeological trial trenching in advance of construction	Negligible	Negligible
CH8	53	Kirkton, Pits	None	Medium	Permanent	Adverse	Construction of the Proposed Development would wholly remove this heritage asset.	Substantial	Major	Archaeological excavation informed by archaeological field walking, archaeological geophysical survey and archaeological trial trenching in advance of construction	Slight	Minor
CH8	92	Broombank Enclosure	None	Medium	Permanent	Adverse	Construction of the Proposed Development would wholly remove this heritage asset.	Substantial	Major	Archaeological excavation informed by archaeological field walking, archaeological geophysical survey and archaeological trial trenching in advance of construction	Slight	Minor
CH8	154	Hurlie Bog, Hollow Way	None	Low	Permanent	Adverse	Construction of the Proposed Development would remove the majority of this heritage asset.	Substantial	Moderate	Archaeological excavation informed by archaeological trial trenching in advance of construction	Negligible	Negligible

## 9.10 Inter-Related Effects

- 9.10.1 Inter-relationships are considered to be the impacts and associated effects of different aspects of the Proposed Development on the same heritage asset.
- 9.10.2 The potential for inter-related effects (see Volume 1, Chapter 3: EIA Methodology) for Cultural Heritage were considered as part of the assessment presented in Section 9.9. This included consideration of the results of the noise and vibration assessment (Volume 1, Chapter 13) and landscape and visual assessment (Volume 1, Chapter 8). No inter-related effects were assessed.

## 9.11 Cumulative Effects Assessment

### Methodology

- 9.11.1 The Cumulative Effects Assessment (CEA) assesses the impact associated with the Proposed Development together with other relevant projects and activities. Cumulative effects are defined as the effect of the Proposed Development in combination with the effects from a number of different projects, on the same receptor or resource.
- 9.11.2 The projects selected as relevant to the CEA presented within this chapter are based upon the results of a screening exercise of the long list of Cumulative Projects included in Table 3.9 within Volume 1, Chapter 3: EIA Methodology. Full details on CEA methodology are provided in Volume 1, Chapter 3: EIA Methodology where further information is provided in relation to the other projects and how this information is obtained and applied to the assessment; the methodology for the Cultural Heritage CEA is also presented in Section 9.5. Each project has been considered on a case-by-case basis for screening in or out of this chapter's assessment based upon data confidence, effect-receptor pathways and the spatial/temporal scales involved.
- 9.11.3 The specific projects scoped into the Cumulative Effects Assessment (CEA) for Cultural Heritage, are outlined in

**Table 9.10: Screening of Other Projects for Consideration within the CEA for Cultural Heritage**

Project	Overlap with the Proposed Development	Screened into CEA (Yes/No)
<b>Tier 2</b>		
<b>Hurlie 400 kV Substation</b> APP/2024/1951, ENQ/2024/1176, ENQ/2024/0146	Physical overlap	Yes
<b>Grains Of Fetteresso Indoor Play Area</b> APP/2025/0058	No expected overlap and/or common receptors.	No
<b>The Waters BESS</b> ENQ/2024/1615, ENQ/2024/1830		No
<b>Fetteresso 132 kV Substation Upgrade</b> ENQ/2025/1103,		No

Project	Overlap with the Proposed Development	Screened into CEA (Yes/No)
ENQ/2025/1000		
S36 Windfarm, Fetteresso Forest, ECU00001851, APP/2019/1341		No
Glenskinnan Renewable Energy Park ENQ/2025/0960		No
Craigneil Wind Farm ENQ/2024/0640		No
Meetlaw Farm Battery Energy Storage System, APP/2022/2676		No
East Coast Viners Solar Storage Project APP/2022/1701		No
<b>Tier 3</b>		
Tealing to Kintore 400 kV OHL ENQ/2024/1397, ECU00005225	No expected overlap and/or common receptors.	No
Droop Hill Solar Park ENQ/2025/0368, APP/2025/0560		No
Glendye Wind Farm 132 kV OHL ENQ/2024/1818, ECU0005197		No
Bridgend Farm BESS ENQ/2024/0747, APP/2025/0089		No
Quithel 50 MW BESS ENQ/2023/1713		No
Northeast Of Drumlithie BESS ENQ/2023/0093		No

### Maximum Design Scenario

9.11.4 The cumulative effects presented and assessed in this section have been selected from the details provided in Volume 1, Chapter 2: The Proposed Development as well as the information available on other projects, to inform a ‘maximum design scenario’. Any other development scenario within the Project Design Envelope (PDE), will result in in the same, or less, level of environmental effect.

### **Cumulative Effects Assessment**

9.11.5 An assessment of the likely significance of the cumulative effects of the Proposed Development upon heritage assets arising from each identified impact is given below.

#### **Construction**

##### *Hurlie Bog, Hollow Way (Asset 154)*

9.11.6 Hurlie Bog, Hollow Way (Asset 154) has been assessed to be of Low sensitivity. After mitigation the residual effect on Hurlie Bog, Hollow Way (Asset 154) was assessed to be of Negligible significance, and therefore not significant.

9.11.7 The EIAR for the Hurlie 400 kV Substation (APP/2024/1951) assessed the residual significance of effect on Hurlie Bog, Hollow Way (Asset 154) to be Negligible.

9.11.8 The Proposed Development would result in the permanent removal in full of this heritage asset, therefore the combined effect of the Proposed Development with the Hurlie 400 kV Substation on Hurlie Bog, Hollow Way (Asset 154) would be no greater than that assessed for the Proposed Development. The magnitude of this cumulative impact has therefore been assessed to be negligible and the significance of this cumulative effect Negligible, which is a non-significant effect.

#### **Operation**

##### *Auquhirie Farmhouse (Asset 137; Category C Listed Building)*

9.11.9 Hurlie 400 kV Substation identified a potential impact on the setting of Auquhirie Farmhouse (Asset 137; Category C Listed Building) during operation. However due to screening by established trees that will be retained, the Proposed Development would not affect the setting of Asset 137 which comprises of its secluded position within woodland, and its relationship with its associated agricultural buildings and the Carron Water. Therefore, no cumulative effects from the Hurlie 400 kV Substation and the Proposed Development during operation have been assessed for this heritage asset.

## **9.12 Summary of Impacts, Mitigation and Likely Significant Environmental Effects**

9.12.1 No likely effects have been assessed for designated heritage assets during either the construction phase or operation and maintenance phase.

9.12.2 During construction, before mitigation, potentially significant effects were identified for the following heritage assets:

- Haughs of Benholm Cropmarks (Asset 5);
- Nether Beholm Cropmark (Asset 9);
- Mains of Benholm Cropmark (Asset 23);
- Peattie Enclosure (Asset 47);
- Kirkton, Pits (Asset 53);
- Broombank Enclosure (Asset 92); and

- Hurlie Bog, Hollow Way (Asset 154).

9.12.3 After additional mitigation, no significant effects for archaeological remains, historic buildings and the historic landscape have been assessed.

9.12.4 No significant cumulative effects have been assessed.

## References

### Historic Maps and Aerial Imagery

- Ordnance Survey, Kincardineshire, Sheet XI, 6" to 1 mile, First Edition surveyed 1864, published 1868.
- Ordnance Survey, Kincardineshire, Sheet XVII, 6" to 1 mile, First Edition surveyed 1865, published 1868.
- Ordnance Survey, Kincardineshire, Sheet XX, 6" to 1 mile, First Edition surveyed 1863-4, published 1868.
- GoogleEarth, various

### Sources

- Aberdeenshire Council, (2023). *Aberdeenshire Local Development Plan*. Available online at: <https://online.aberdeenshire.gov.uk/ldpmedia/LDP2021/AberdeenshireLocalDevelopmentPlan2023IntroductionAndPolicies.pdf>. Accessed: June 2025.
- Chartered Institute for Archaeologists (CIfA), (2020a). *Standard and guidance for historic environment desk-based assessment*. Available online at: <https://www.archaeologists.net/sites/default/files/2023-11/CIfA-SandG-DBA-2020.pdf>. Accessed: June 2025.
- Chartered Institute for Archaeologists (CIfA), (2020b). *Standard and guidance for archaeological geophysical survey*. Available online at: <https://www.archaeologists.net/sites/default/files/2023-11/CIfA-SandG-Geophysical-Survey-2020.pdf>. Accessed: October 2025.
- Chartered Institute for Archaeologists (CIfA), (2022). *Code of conduct: professional ethics in archaeology*. Available online at: <https://www.archaeologists.net/sites/default/files/2023-11/CIfA-Code-of-Conduct-2022.pdf>. Accessed: June 2025.
- Chartered Institute for Archaeologists (CIfA), (2023a). *Standard for archaeological field evaluation*. Available online at: [https://www.archaeologists.net/sites/default/files/2024-11/CIfA-Standard-Field-Evaluation\\_2023.pdf](https://www.archaeologists.net/sites/default/files/2024-11/CIfA-Standard-Field-Evaluation_2023.pdf). Accessed October 2025.
- Chartered Institute for Archaeologists (CIfA), (2023b). *Universal guidance for archaeological field evaluation*. Available online at: [https://www.archaeologists.net/sites/default/files/2024-11/CIfA-Universal-Guidance-Archaeological-Field-Evaluation\\_2023.pdf](https://www.archaeologists.net/sites/default/files/2024-11/CIfA-Universal-Guidance-Archaeological-Field-Evaluation_2023.pdf). Accessed: October 2025.
- Chartered Institute for Archaeologists (CIfA), (2023c). *Standard for archaeological excavation*. Available online at: [https://www.archaeologists.net/sites/default/files/2024-11/CIfA-Standard-Archaeological-Excavation\\_2023.pdf](https://www.archaeologists.net/sites/default/files/2024-11/CIfA-Standard-Archaeological-Excavation_2023.pdf). Accessed: October 2025.
- Chartered Institute for Archaeologists (CIfA), (2023d). *Universal guidance for archaeological excavation*. Available online at: [https://www.archaeologists.net/sites/default/files/2024-11/CIfA-Universal-Guidance-Archaeological-Excavation\\_2023.pdf](https://www.archaeologists.net/sites/default/files/2024-11/CIfA-Universal-Guidance-Archaeological-Excavation_2023.pdf). Accessed: October 2025.
- Historic England, (2017). *Understanding the Archaeology of Landscapes A Guide to Good Recording Practice (Second Edition)*. Available online at: <https://historicengland.org.uk/images-books/publications/understanding-archaeology-of-landscapes/heag142-understanding-archaeology-of-landscapes/>. Accessed: August 2025.
- Historic Environment Scotland (HES), (n.d.a). *Arbuthnott House (GDL00016)*. Available online at: <https://portal.historicenvironment.scot/apex/?p=1505:300:::VIEWTYPE.VIEWREF:designaton,GDL00016>. Accessed: June 2025].

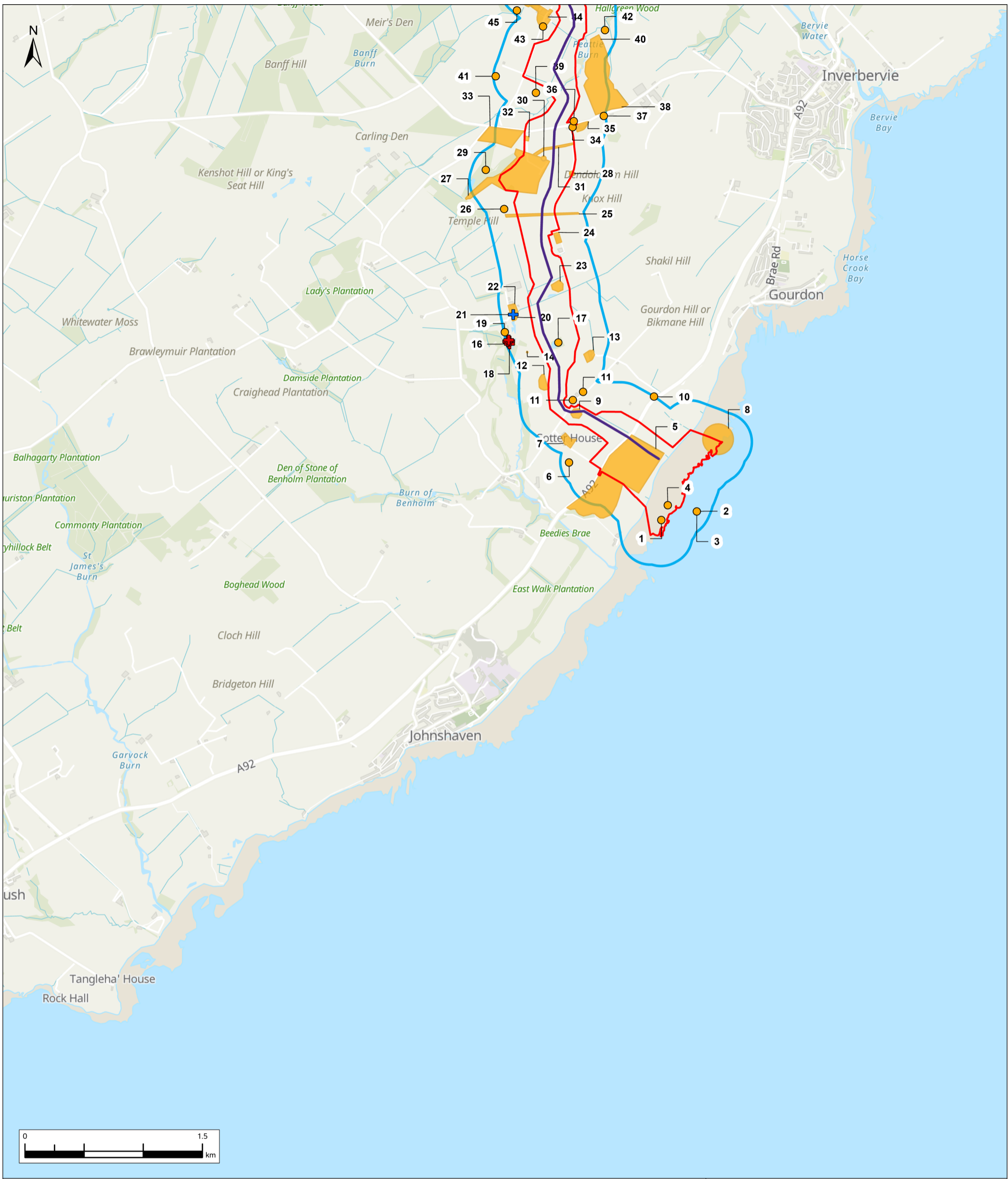
- Historic Environment Scotland (HES), (n.d.b). *Glenbervie House (GDL00194)*. Available online at: <https://portal.historicenvironment.scot/apex/f?p=1505:300:::::VIEWTYPE,VIEWREF:designati on,GDL00194>. Accessed: June 2025.
- Historic Environment Scotland (HES), (2016a). *Managing Change in the Historic Environment: Setting*. Available online at: <https://www.historicenvironment.scot/archives-and-research/publications/publication/?publicationid=80b7c0a0-584b-4625-b1fd-a60b009c2549>. Accessed: August 2025.
- Historic Environment Scotland (HES), (2016b). *Managing Change in the Historic Environment: Gardens and Designed Landscapes*. Available online at: <https://www.historicenvironment.scot/archives-and-research/publications/publication/?publicationid=83214207-c4e7-4f80-af87-a678009820b9>. Accessed: August 2025.
- Historic Environment Scotland (HES), (2019a). *Historic Environment Policy for Scotland*. Available online at: <https://www.historicenvironment.scot/archives-and-research/publications/publication/?publicationid=1bcfa7b1-28fb-4d4b-b1e6-aa2500f942e7>. Accessed: August 2025.
- Historic Environment Scotland (HES), (2019b). *Historic Environment Scotland Circular- Regulations and Procedures*. Available online at: <https://www.historicenvironment.scot/archives-and-research/publications/publication/?publicationid=a768f3cb-eb44-4473-be7b-aa2500e4892b>. Accessed: August 2025.
- Historic Environment Scotland (HES), (2019c). *Designation Policy and Selection Guidance*. Available online at: <https://www.historicenvironment.scot/archives-and-research/publications/publication/?publicationid=8d8bbaeb-ce5a-46c1-a558-aa2500ff7d3b>. Accessed: August 2025.
- Rippon, S., (2004). *Historic Landscape Analysis: Deciphering the Countryside*. Practical Handbooks in Archaeology No. 16. Council for British Archaeology.
- Scottish Government, (2011). *Planning Advice Note 2/2011: Planning and Archaeology*. Available online at: <https://www.gov.scot/publications/pan-2-2011-planning-archaeology/>. Accessed August: 2025.
- Scottish Government, (2015). *Scotland's National Marine Plan: A Single Framework for Managing Our Seas*. Available online at: <https://www.gov.scot/binaries/content/documents/govscot/publications/strategy-plan/2015/03/scotlands-national-marine-plan/documents/00475466-pdf/00475466-pdf/govscot%3Adocument/00475466.pdf>. Accessed: August 2025.
- Scottish Government, (2023a). *National Planning Framework 4*. Available online at: <https://www.gov.scot/binaries/content/documents/govscot/publications/strategy-plan/2023/02/national-planning-framework-4/documents/national-planning-framework-4-revised-draft/national-planning-framework-4-revised-draft/govscot%3Adocument/national-planning-framework-4.pdf>. Accessed: August 2025.
- Scottish Government, (2023b). *Our Past, Our Future The Strategy for Scotland's Historic Environment*. Available online at: <https://www.historicenvironment.scot/archives-and-research/publications/publication/?publicationid=79204155-9eb2-4d29-ab14-aff200ec2801>. Accessed: August 2025.
- Scottish Natural Heritage and Historic Environment Scotland (HES), (2018). *Environmental Impact Assessment Handbook: Guidance for competent authorities, consultation bodies, and others involved in the Environmental Impact Assessment process in Scotland*. Available online at: <https://www.historicenvironment.scot/archives-and-research/publications/publication/?publicationid=79204155-9eb2-4d29-ab14-aff200ec2801>

[research/publications/publication/?publicationId=6ed33b65-9df1-4a2f-acbb-a8e800a592c0](https://www.research/publications/publication/?publicationId=6ed33b65-9df1-4a2f-acbb-a8e800a592c0). Accessed: August 2025.

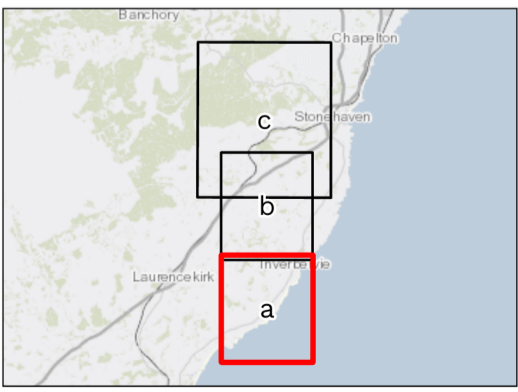
Thistle Wind Partners (TWP), (2024). *Bowdun Offshore Wind Farm Onshore Scoping Report*. TWP-BOW-RPS-OSC-RPT-00002.

UNESCO (2024). Operational Guidelines for the World Heritage Convention. Available online at: <https://whc.unesco.org/en/guidelines/>. Accessed: October 2025.

## **Annex – Figures**



- Legend**
- PPP Application Boundary
  - Substation Search Area
  - Cultural Heritage Study Area (250m)
  - 3km Cultural Heritage Study Area
  - 5km Cultural Heritage Study Area
  - Indicative 220/275 kV Cable Centreline
  - Indicative 400 kV Cable Centreline
  - + Category A Listed Building
  - + Category B Listed Building
  - + Category C Listed Building
  - Conservation Area
  - Scheduled Monument
  - } Non-designated archaeological remains and historic buildings

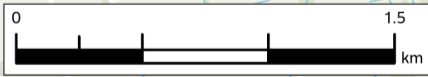
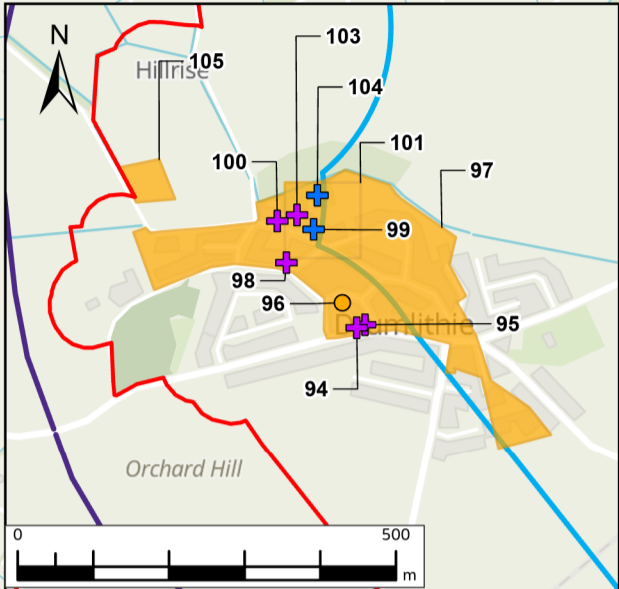
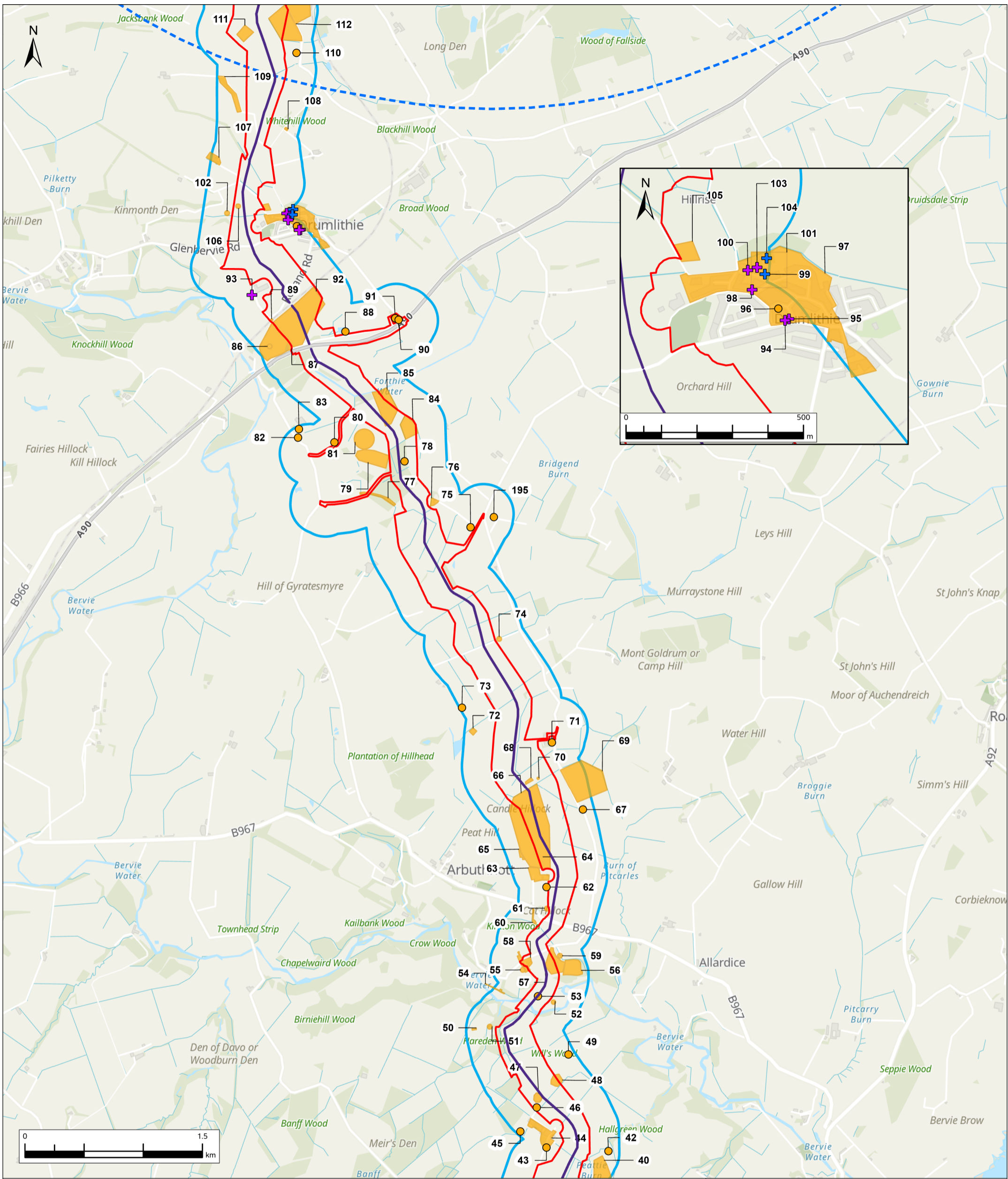


Contains OS data © Crown copyright and database rights 2025.  
Contains data from OS Zoomstack

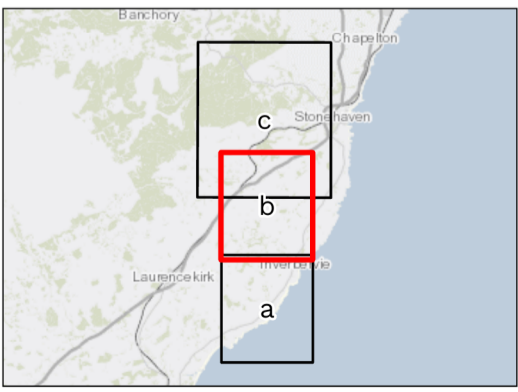
03	NOV 25	FINAL	TM	AP	JD	GG
Rev.	Date	Purpose of revision	Drawn	Check'd	Rev'd	Appr'd
Scale @ A3	Scale: 1:30,000		DO NOT SCALE			
Jacobs No.	B2487500					

© Copyright 2025 Jacobs U.K. Limited. The concepts and information contained in this document are the property of Jacobs. Use or copying of this document in whole or in part without the written permission of Jacobs constitutes an infringement of copyright.  
Limitation: This drawing has been prepared on behalf of, and for the exclusive use of Jacobs' Client, and is subject to, and issued in accordance with, the provisions of the contract between Jacobs and the Client. Jacobs accepts no liability or responsibility whatsoever for, in respect of, any use of, or reliance upon, this drawing by any third party.

Client		
Project	Bowdun Offshore Wind Farm Onshore EIA Report	
Drawing Title	Archaeological Remains and Historic Buildings	
Aconnex Number	TWP-BOW-JCB-ONE-DWG-00001	Drawing Status
		FINAL
Figure 9.1a		Sheet 1 of 3



- Legend**
- PPP Application Boundary
  - Substation Search Area
  - Cultural Heritage Study Area (250m)
  - 3km Cultural Heritage Study Area
  - 5km Cultural Heritage Study Area
  - Indicative 220/275 kV Cable Centreline
  - Indicative 400 kV Cable Centreline
  - + Category A Listed Building
  - + Category B Listed Building
  - + Category C Listed Building
  - Conservation Area
  - Scheduled Monument
  - } Non-designated archaeological remains and historic buildings



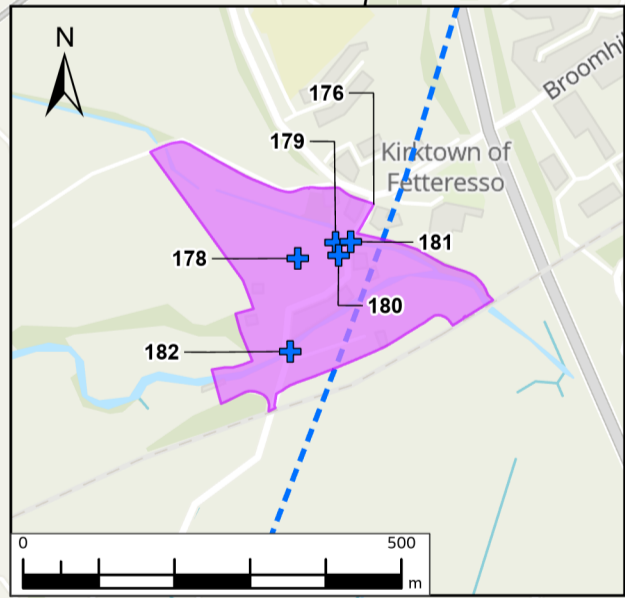
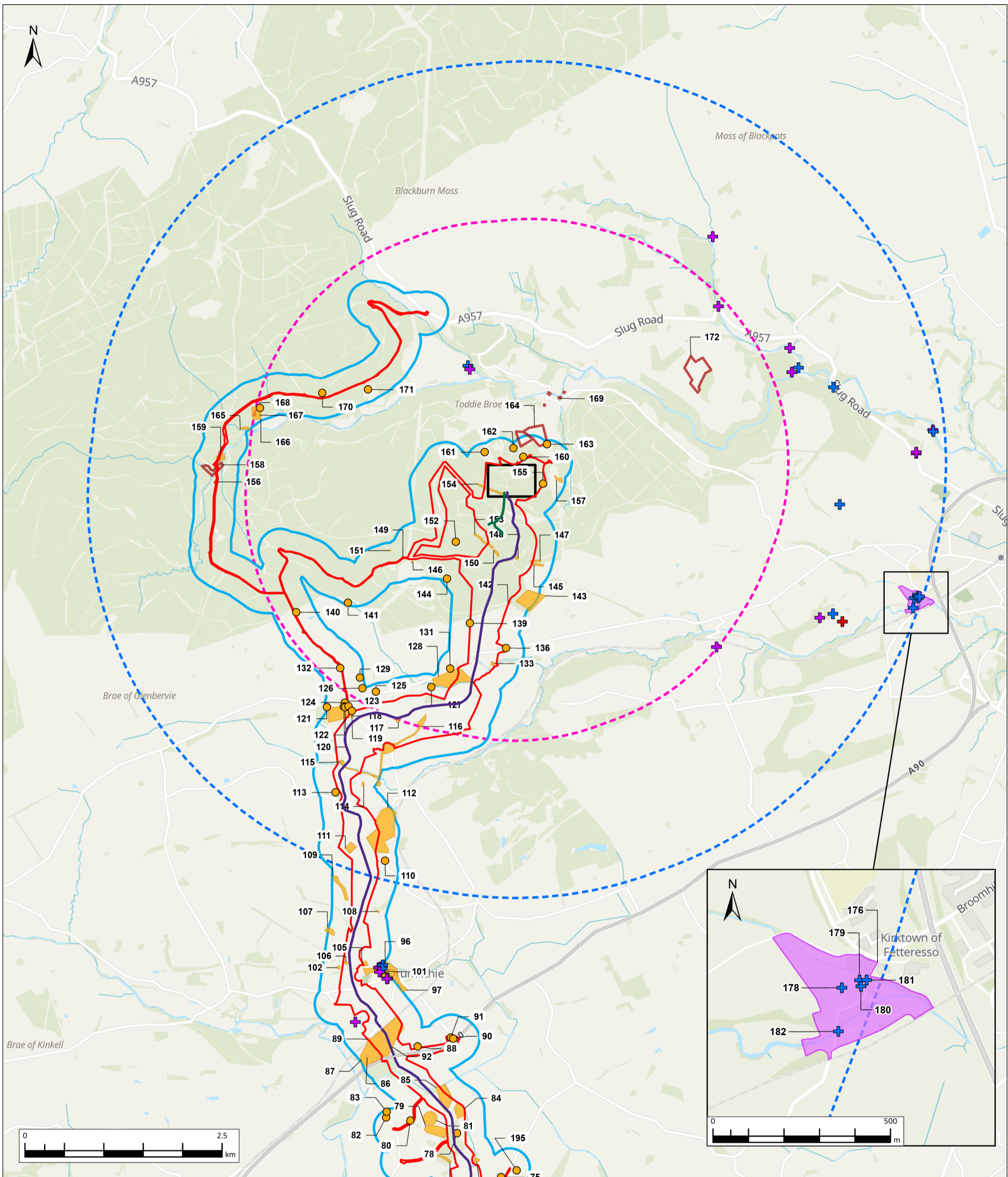
**Jacobs**  
**TWP THISTLE WIND PARTNERS**

Client		
Project	Bowdun Offshore Wind Farm Onshore EIA Report	
Drawing Title	Archaeological Remains and Historic Buildings	

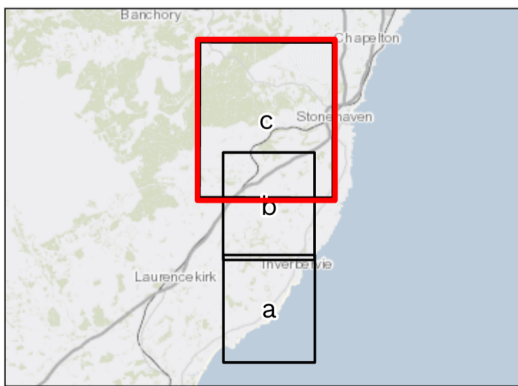
03	NOV 25	FINAL	TM	AP	JD	GG
Rev.	Date	Purpose of revision	Drawn	Check'd	Rev'd	Appr'd
Scale @ A3	Scale: 1:30,000		DO NOT SCALE			
Jacobs No.	B2487500					

© Copyright 2025 Jacobs U.K. Limited. The concepts and information contained in this document are the property of Jacobs. Use or copying of this document in whole or in part without the written permission of Jacobs constitutes an infringement of copyright. Limitation: This drawing has been prepared on behalf of, and for the exclusive use of Jacobs' Client, and is subject to, and issued in accordance with, the provisions of the contract between Jacobs and the Client. Jacobs accepts no liability or responsibility whatsoever for, or in respect of, any use of, or reliance upon, this drawing by any third party.

Aconnex Number	Drawing Status
TWP-BOW-JCB-ONE-DWG-00001	FINAL
Figure 91b	
Sheet 2 of 3	



- Legend**
- PPP Application Boundary
  - Substation Search Area
  - Cultural Heritage Study Area (250m)
  - 3km Cultural Heritage Study Area
  - 5km Cultural Heritage Study Area
  - Indicative 220/275 kV Cable Centreline
  - Indicative 400 kV Cable Centreline
  - + Category A Listed Building
  - + Category B Listed Building
  - + Category C Listed Building
  - Conservation Area
  - Scheduled Monument
  - } Non-designated archaeological remains and historic buildings

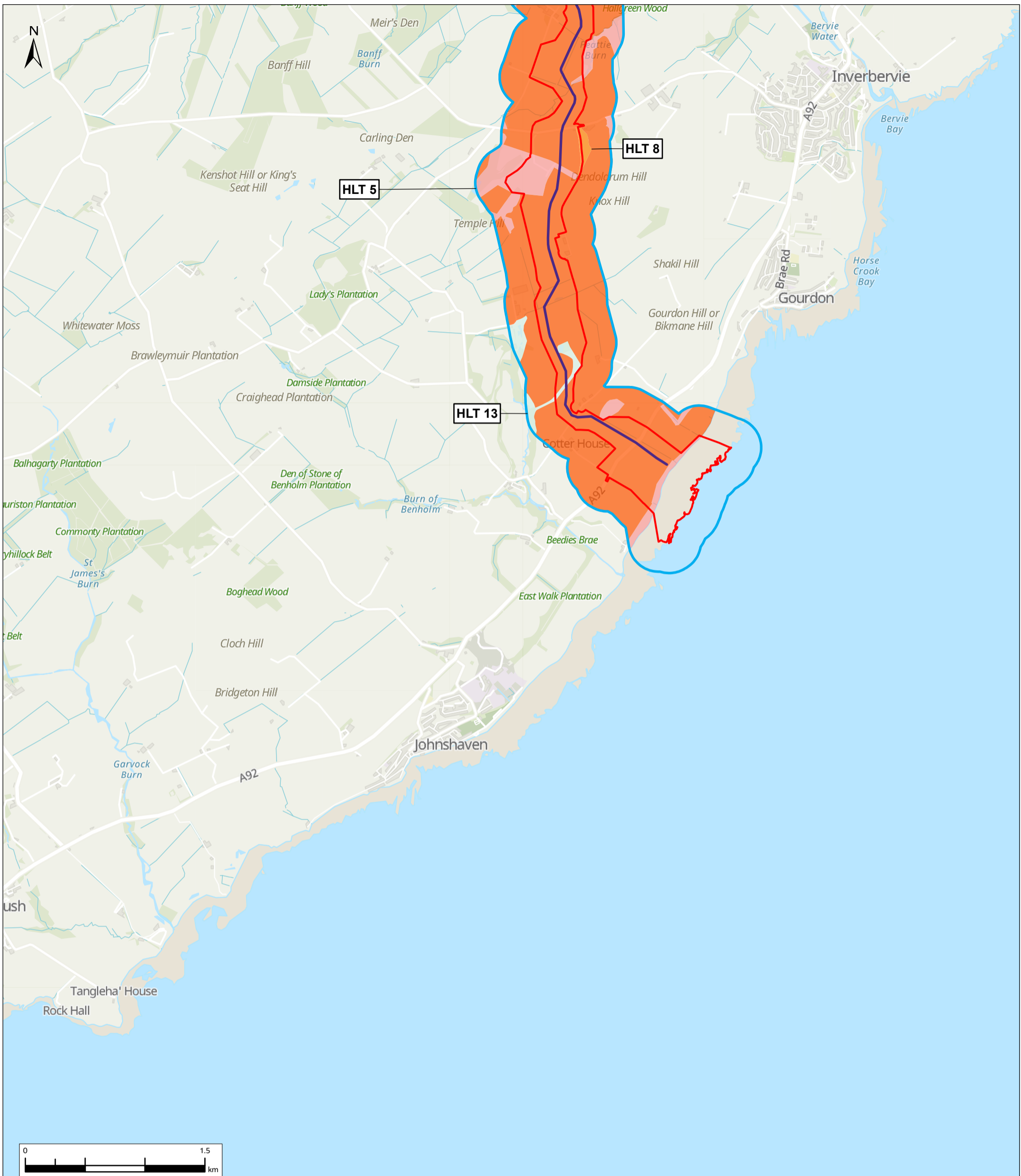


Contains OS data © Crown copyright and database rights 2025.  
Contains data from OS Zoomstack

03	NOV 25	FINAL	TM	AP	JD	GG
Rev.	Date	Purpose of revision	Drawn	Check'd	Rev'd	Appr'd
Scale @ A3	Scale: 1:45,000		DO NOT SCALE			
Jacobs No.	B2487500					

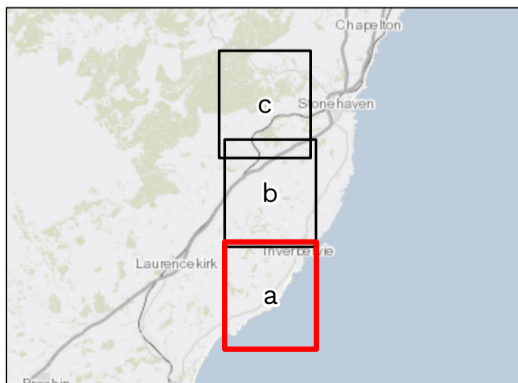
© Copyright 2025 Jacobs U.K. Limited. The concepts and information contained in this document are the property of Jacobs. Use or copying of this document in whole or in part without the written permission of Jacobs constitutes an infringement of copyright.  
Limitation: This drawing has been prepared on behalf of, and for the exclusive use of Jacobs' Client, and is subject to, and issued in accordance with, the provisions of the contract between Jacobs and the Client. Jacobs accepts no liability or responsibility whatsoever for, or in respect of, any use of, or reliance upon, this drawing by any third party.

Client		
Project	Bowdun Offshore Wind Farm Onshore EIA Report	
Drawing Title	Archaeological Remains and Historic Buildings	
Aconnex Number	TWP-BOW-JCB-ONE-DWG-00001	Drawing Status
		FINAL
Figure 9.1c		
Sheet 3 of 3		



- Legend**
- PPP Application Boundary
  - Cultural Heritage Study Area (250m)
  - Substation Search Area
  - Indicative 220/275 kV Cable Centreline
  - Indicative 400 kV Cable Centreline
- Historic Landscape Types (HLTs)**
- Arbuthnott House Garden and Designed Landscape (HLT 1)
  - Glenbervie House Garden and Designed Landscape (HLT 2)
  - 19th Century-Present Urban Area (HLT 3)
  - 19th-20th Century Smallholdings (HLT 4)
  - Late 20th Century-Present Rough Grazing (HLT 5)
  - 18th Century-Present Rectilinear Fields and Farms (HLT 6)
  - 19th Century-Present Recreation Area (HLT 7)
  - 19th Century-Present Quarry (HLT 8)
  - 20th Century-Present Plantation (HLT 9)
  - Late 20th Century-Present Motorway and Major Roads (HLT 10)
  - Medieval Built-up Area (HLT 11)
  - 18th-20th Century Managed Woodland (HLT 12)
  - 17th-20th Century Designed Landscape (HLT 13)

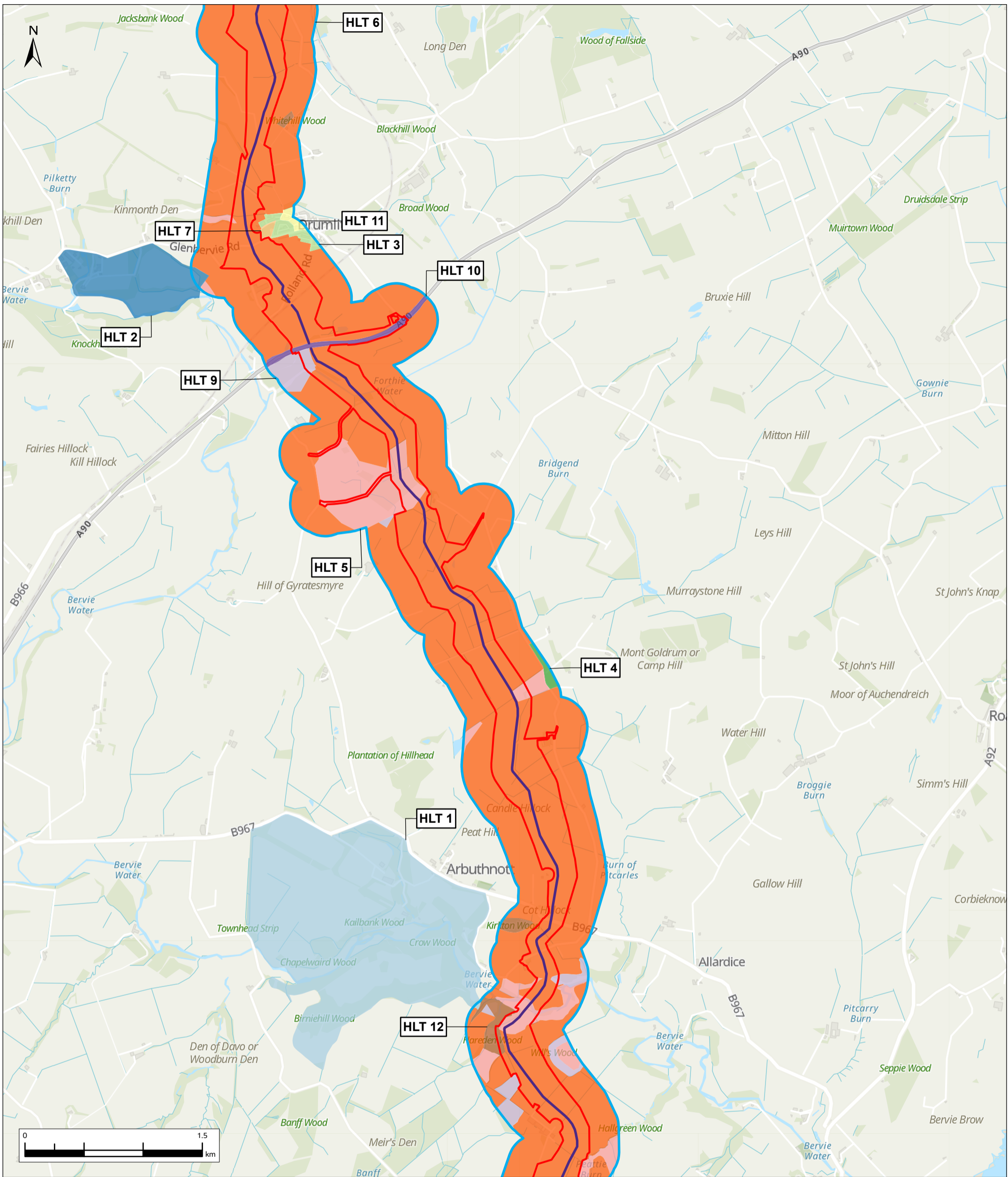
Contains OS data © Crown copyright and database rights 2025. Contains data from OS Zoomstack



Client	<b>Jacobs</b> <b>TWP THISTLE WIND PARTNERS</b>	
Project	Bowdun Offshore Wind Farm Onshore EIA Report	
Drawing Title	Historic Landscape Types (HLTs)	
Aconnex Number	TWP-BOW-JCB-ONE-DWG-00002	Drawing Status
		FINAL
	Figure 9.2a	Sheet 1 of 3

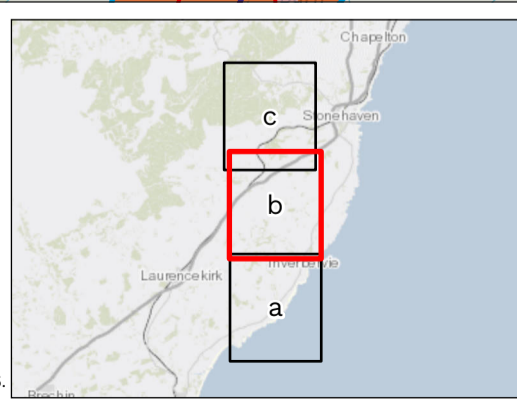
03	NOV 25	FINAL	TM	AP	JD	GG
Rev.	Date	Purpose of revision	Drawn	Check'd	Rev'd	Appr'd
Scale @ A3	Scale: 1:30,000		DO NOT SCALE			
Jacobs No.	B2487500					

© Copyright 2025 Jacobs U.K. Limited. The concepts and information contained in this document are the property of Jacobs. Use or copying of this document in whole or in part without the written permission of Jacobs constitutes an infringement of copyright. Limitation: This drawing has been prepared on behalf of, and for the exclusive use of Jacobs' Client, and is subject to, and issued in accordance with, the provisions of the contract between Jacobs and the Client. Jacobs accepts no liability or responsibility whatsoever for, or in respect of, any use of, or reliance upon, this drawing by any third party.



Legend	
	PPP Application Boundary
	Cultural Heritage Study Area (250m)
	Substation Search Area
	Indicative 220/275 kV Cable Centreline
	Indicative 400 kV Cable Centreline
Historic Landscape Types (HLTs)	
	Arbutnot House Garden and Designed Landscape (HLT 1)
	Glenberrie House Garden and Designed Landscape (HLT 2)
	19th Century-Present Urban Area (HLT 3)
	19th-20th Century Smallholdings (HLT 4)
	Late 20th Century-Present Rough Grazing (HLT 5)
	18th Century-Present Rectilinear Fields and Farms (HLT 6)
	19th Century-Present Recreation Area (HLT 7)
	19th Century-Present Quarry (HLT 8)
	20th Century-Present Plantation (HLT 9)
	Late 20th Century-Present Motorway and Major Roads (HLT 10)
	Medieval Built-up Area (HLT 11)
	18th-20th Century Managed Woodland (HLT 12)
	17th-20th Century Designed Landscape (HLT 13)

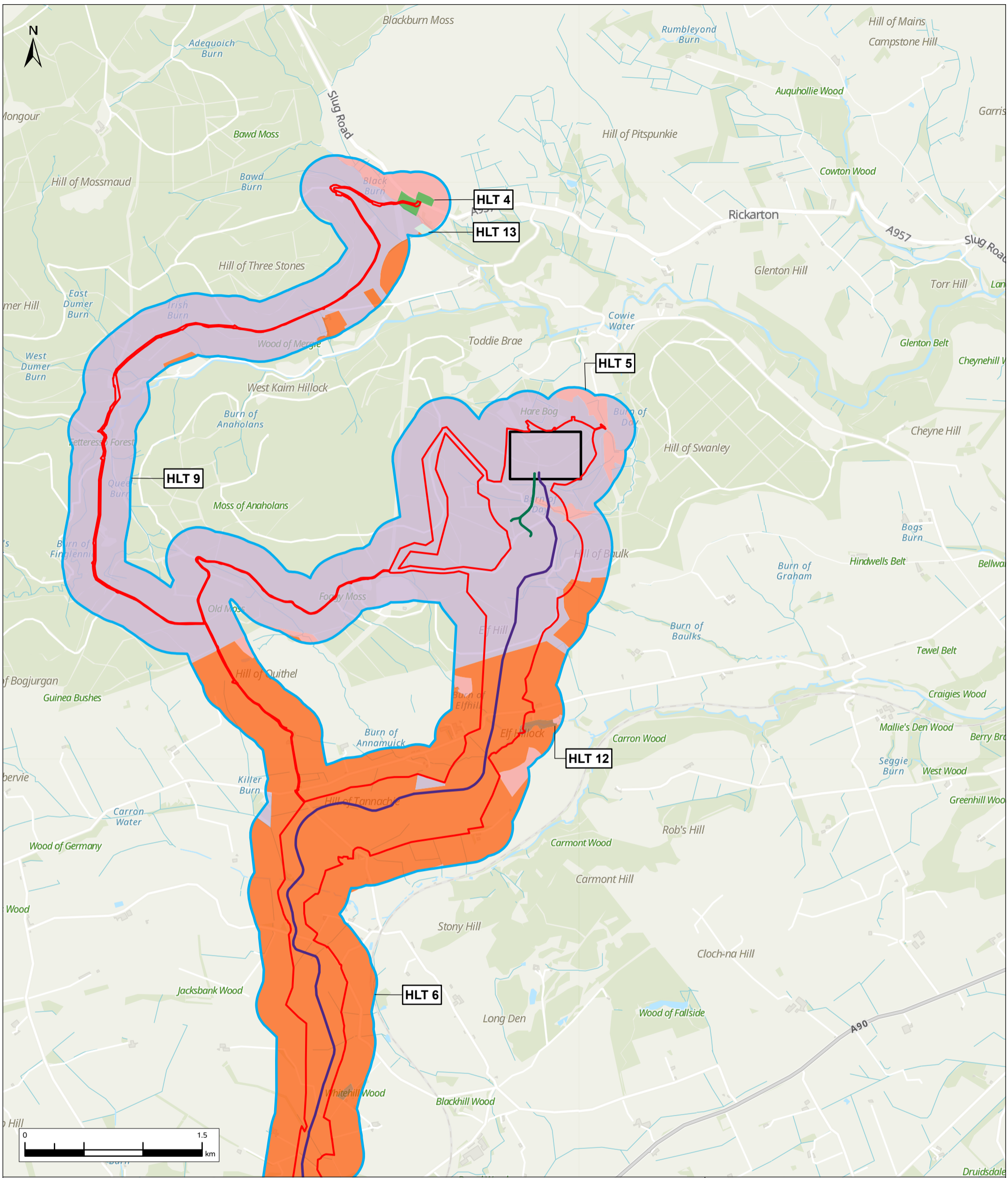
Contains OS data © Crown copyright and database rights 2025. Contains data from OS Zoomstack



Client	Bowdun Offshore Wind Farm Onshore EIA Report	
Project	Historic Landscape Types (HLTs)	
Drawing Title	Historic Landscape Types (HLTs)	
Aconnex Number	TWP-BOW-JCB-ONE-DWG-00002	Drawing Status
		FINAL

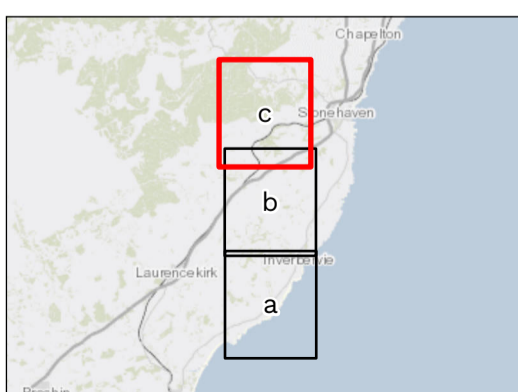
03	NOV 25	FINAL	TM	AP	JD	GG
Rev.	Date	Purpose of revision	Drawn	Check'd	Rev'd	Appr'd
Scale @ A3	Scale: 1:30,000		DO NOT SCALE			
Jacobs No.	B2487500					

© Copyright 2025 Jacobs U.K. Limited. The concepts and information contained in this document are the property of Jacobs. Use or copying of this document in whole or in part without the written permission of Jacobs constitutes an infringement of copyright. Limitation: This drawing has been prepared on behalf of, and for the exclusive use of Jacobs' Client, and is subject to, and issued in accordance with, the provisions of the contract between Jacobs and the Client. Jacobs accepts no liability or responsibility whatsoever for, or in respect of, any use of, or reliance upon, this drawing by any third party.



- Legend**
- PPP Application Boundary
  - Cultural Heritage Study Area (250m)
  - Substation Search Area
  - Indicative 220/275 kV Cable Centreline
  - Indicative 400 kV Cable Centreline
- Historic Landscape Types (HLTs)**
- Arbutnott House Garden and Designed Landscape (HLT 1)
  - Glenbervie House Garden and Designed Landscape (HLT 2)
  - 19th Century-Present Urban Area (HLT 3)
  - 19th-20th Century Smallholdings (HLT 4)
  - Late 20th Century-Present Rough Grazing (HLT 5)
  - 18th Century-Present Rectilinear Fields and Farms (HLT 6)
  - 19th Century-Present Recreation Area (HLT 7)
  - 19th Century-Present Quarry (HLT 8)
  - 20th Century-Present Plantation (HLT 9)
  - Late 20th Century-Present Motorway and Major Roads (HLT 10)
  - Medieval Built-up Area (HLT 11)
  - 18th-20th Century Managed Woodland (HLT 12)
  - 17th-20th Century Designed Landscape (HLT 13)

Contains OS data © Crown copyright and database rights 2025. Contains data from OS Zoomstack



Client		
Project	Bowdun Offshore Wind Farm Onshore EIA Report	
Drawing Title	Historic Landscape Types (HLTs)	

03	NOV 25	FINAL	TM	AP	JD	GG
Rev.	Date	Purpose of revision	Drawn	Check'd	Rev'd	Appr'd
Scale @ A3	Scale: 1:30,000		DO NOT SCALE			
Jacobs No.	B2487500					

© Copyright 2025 Jacobs U.K. Limited. The concepts and information contained in this document are the property of Jacobs. Use or copying of this document in whole or in part without the written permission of Jacobs constitutes an infringement of copyright. Limitation: This drawing has been prepared on behalf of, and for the exclusive use of Jacobs' Client, and is subject to, and issued in accordance with, the provisions of the contract between Jacobs and the Client. Jacobs accepts no liability or responsibility whatsoever for, or in respect of, any use of, or reliance upon, this drawing by any third party.

Aconnex Number TWP-BOW-JCB-ONE-DWG-00002	Drawing Status FINAL
Figure 9.2c	
Sheet 3 of 3	